



280 Clausen Crescent Fort McMurray Alberta

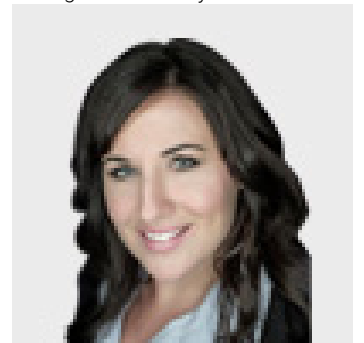
\$274,900

Welcome to 280 Clausen Crescent: Step into this stunning newer three bedroom, two bathroom home in Timberlea. Built in 2018, this home offers ample front and RV parking along with a recently landscaped and sodded back and front yard. The private fully fenced yard is perfect for outdoor gatherings and includes a 10 x 12 shed with double doors and a convenient ramp for easy access to your recreational toys. Inside, the home boasts a modern aesthetic with grey flooring and walls, creamy kitchen cupboards and upgraded black stainless steel appliances. The vaulted ceilings and large windows with no string window treatment lend themselves to the homes light and airy aesthetic, and the open concept feels spacious and welcoming. The primary bedroom is a true retreat, featuring an extra-large walk-in closet and a luxurious four piece ensuite bathroom. Pamper yourself in the ensuite, which includes a standup shower, separate soaker tub, and additional counter space for a vanity. Notable features of this home include an Energy Savings Package, Lifetime Architectural Shingles, Steel Pile foundation, Central A/C, and Braided Water Lines to all sinks and toilets. Ready for immediate possession schedule a tour of your new home today. (id:6769)

4pc Bathroom 5.33 Ft x 7.92 Ft
4pc Bathroom 9.50 Ft x 8.17 Ft
Bedroom 9.17 Ft x 11.17 Ft
Bedroom 9.17 Ft x 11.50 Ft
Dining room 8.33 Ft x 9.83 Ft

Foyer 5.58 Ft x 15.00 Ft
Kitchen 6.92 Ft x 19.25 Ft
Laundry room 7.83 Ft x 9.25 Ft
Living room 15.08 Ft x 11.92 Ft
Primary Bedroom 15.08 Ft x 11.50 Ft

Listing Presented By:



Originally Listed by:
The Agency North Central Alberta

<http://www.theagencyfortmcmurray.com/>

RE/MAX[®]

RE/MAX Fort McMurray

9919 Biggs Avenue , Fort
McMurray, AB,

Phone: 780-880-7173
jadenek@remax.net