



307 Prospect Drive Fort McMurray Alberta

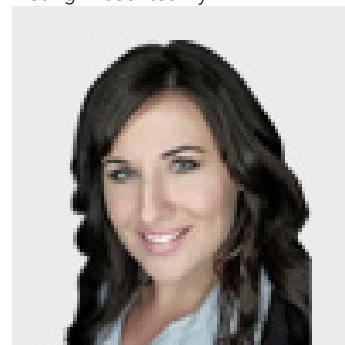
\$485,000

Welcome to 307 Prospect Drive, a beautifully upgraded home next to the greenspace, just steps to the park and outdoor rink! The first floor of this home features an open concept floor plan with engineered hardwood flooring, large living room, half bath, and cozy dining room. The main floor also features a wonderful gourmet kitchen with all the amenities including stainless steel appliances, gas stove, quartz counter tops, and a breakfast bar. Off the kitchen there is access to your low maintenance backyard that requires no mowing! The backyard has gorgeous artificial turf, is fully fenced in with a good sized back deck, and a shed for all of your storage needs. The second level of the home features a large primary bedroom with a modern barn door leading you to your ensuite with a tiled shower. The laundry room is also conveniently located on the upper level, along with another 4 pc bathroom, and two additional great sized bedrooms. Downstairs, the basement is equipped with a separate entrance, in-floor heating and has an additional bedroom room with its own 4 pc ensuite. Downstairs also has a large rec room with a wet bar featuring a wine fridge, sink and cupboard space! This home also has a double concrete parking pad in the back, and sits in an incredible location close to all amenities! All furniture is negotiable! Schedule your personal tour today. (id:6769)

- 3pc Bathroom 2.16 M x 3.38 M
- 4pc Bathroom 2.72 M x 1.47 M
- Bedroom 3.33 M x 3.51 M
- Bedroom 2.95 M x 3.91 M
- Laundry room 2.11 M x 1.73 M
- Primary Bedroom 3.94 M x 3.99 M
- 4pc Bathroom 2.69 M x 2.87 M

- Bedroom 3.28 M x 3.43 M
- Recreational, Games room 5.05 M x 6.88 M
- Furnace 1.88 M x 2.36 M
- 2pc Bathroom 1.50 M x 1.50 M
- Dining room 3.53 M x 3.33 M
- Kitchen 4.67 M x 3.76 M
- Living room 4.40 M x 5.11 M

Listing Presented By:



Originally Listed by:
EXP REALTY



RE/MAX Fort McMurray

9919 Biggs Avenue, Fort McMurray, AB,

Phone: 780-880-7173
jadenek@remax.net