

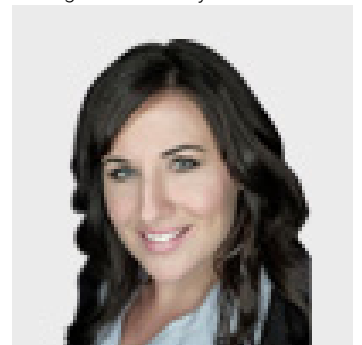


4500 SAPRAE CREEK Trail Fort McMurray Alberta

\$6,950,000

4500 Saprae Creek Trail is located on Highway 69, just south of the Fort McMurray International Airport. The site is a total of 16.68 acres (6.75 ha) and is fully fenced. There are three buildings on site consisting of a modular office structure and two warehouses. Both warehouses with drive in loading, functional design and mix of closed office and amenity space. Each warehouse is secured in a separate fenced yard so a purchaser could occupy one building and lease out the other for income. Equipment and materials onsite are negotiable. (id:6769)

Listing Presented By:



Originally Listed by:
COLDWELL BANKER UNITED

<http://www.colinhartigan.com/>

RE/MAX[®]

RE/MAX Fort McMurray

9919 Biggs Avenue , Fort
McMurray, AB,

Phone: 780-880-7173
jadenek@remax.net