

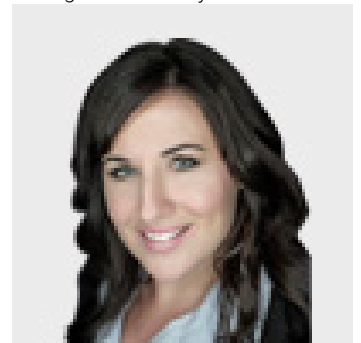


4606 MAPLE Avenue Boyle Alberta

\$29,000

AMAZING PRICE !! ~~~4606 MAPLE 6767 SF LOT~~~ Alberta is starting to take off once again, take advantage of the market NOW! Looking for a fabulous place to live? Allow all your dreams to come true with building your dream home on a Full serviced and cleared LOT. ONLY 7 LEFT! Situated in the heart of a desirable town of Boyle. Be in the center of it all. . Boyle is surrounded by many beautiful lakes and offers a great community spirit, shopping, banking, school (K-12) , library, hospital, seniors center with Live In facility and a dementia wing, golf courses and ski hills near by . Located only 2.5 hrs from Fort McMurray, 1.5 hrs from Edmonton, 35 mins from Athabasca. (id:6769)

Listing Presented By:



Originally Listed by:
RE/MAX FORT MCMURRAY

<http://www.kimshearsbailey.ca>

RE/MAX[®]

RE/MAX Fort McMurray

9919 Biggs Avenue , Fort
McMurray, AB,

Phone: 780-880-7173
jadenek@remax.net