

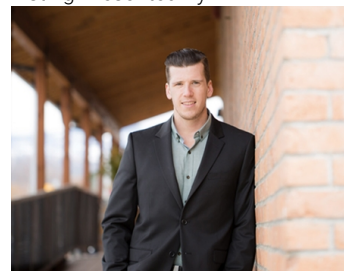


732 Coopland Crescent 1 - 4 Kelowna British Columbia

\$4,500,000

BRAND NEW 4-PLEX - INVESTOR ALERT - AMAZING SOPA LOCATION!!!! #s 1-4 NOW AVAILABLE AS A GROUP PURCHASE & OPEN TO OFFERS! South Pandosy (SOPA) at it's finest. Welcome to 732 Coopland Crescent, where each approx. 2,200 sq. ft. home in this modern & bright 4-Plex comes with an attached side-by-side double garage (roughed for EV Charger), front & rear roof-top decks (approx. 1,000 sq. ft. total, plumbed for hot tub & outdoor kitchen). Quality contemporary finishings throughout each 3-bedroom + den, 3-bathroom home with 10 ft. ceilings (on the main level), plus a laundry room with sink & sorting counter, hot water on demand, & an abundance of storage. An easy walk to beaches, parks, shopping, cafes, restaurants, stores, schools (Raymer Elementary, Kelowna Secondary School, Okanagan College, KLO Middle School), banking, medical facilities & City Transit. Standard Strata Bylaws with fees TBC. GST will be applicable on top of the purchase price. Envision Enviroatcis Group Energy Advisor states a 33.5% increase in energy efficiency than what is required. Images from staged Unit #2. (id:6769)

Listing Presented By:



Originally Listed by:
RE/MAX Kelowna

<http://www.timstanfield.com/>

RE/MAX Kelowna

RE/MAX Kelowna

100-1553 Harvey Avenue ,
Kelowna, BC, V1Y 6G1

Phone: 250-870-6145
dallas@remaxkelowna.com

The property information on this website is derived from the Canadian Real Estate Association's Data Distribution Facility (DDF®). DDF® references real estate listings held by various brokerage firms and franchisees. The accuracy of information is not guaranteed and should be independently verified. The trademarks REALTOR®, REALTORS® and the REALTOR® logo are controlled by The Canadian Real Estate Association (CREA) and identify real estate professionals who are members of CREA. The trademarks MLS®, Multiple Listing Service® and the associated logos are owned by CREA and identify the quality of services provided by real estate professionals who are members of CREA.