

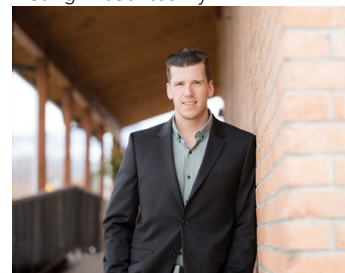


1965 Pier Mac Way 102 Kelowna British Columbia

\$19

For Lease - 5,615 SF Industrial Bay | High-Clearance, Dock + Grade Loading | Kelowna, BC A premium opportunity to secure a highly functional industrial bay in one of Kelowna's most accessible and sought-after industrial nodes. This middle bay offers exceptional loading, high clear heights, and a layout designed for efficient movement of goods, equipment, and materials. Perfect for distribution, light manufacturing, warehousing, specialty trades, or any operation needing modern space with strong logistics flow. Property Highlights: Loading: 1 semi-truck loading dock + 1 grade-level loading door for efficient shipping & receiving Clear Heights: 28' at the low point, 32' at the high point - ideal for high-volume racking Power: 200 AMP electrical service Racking: Additional Rent: \$6.87 PSF Operating Costs (incl. management fee) and Property Taxes. Well-located with excellent accessibility, this space offers flexibility and functionality for growing businesses. Contact us today for more details or to arrange a tour. (id:6769)

Listing Presented By:



Originally Listed by:
Business Finders Canada

<http://www.businessfinderscanada.com/>

RE/MAX Kelowna

RE/MAX Kelowna

100-1553 Harvey Avenue ,
Kelowna, BC, V1Y 6G1

Phone: 250-870-6145
dallas@remaxkelowna.com