

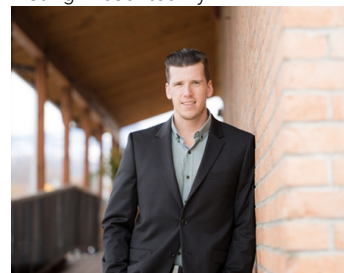


1033 Kitson Court West Kelowna British Columbia

\$569,900

The City of West Kelowna has fully approved and adopted the new BC Regulation which will permit R1 zoning for duplexes with secondary suites. Site coverage allowance of up to 50% and building up to 3 stories. Incredible opportunity to construct a S x S duplex or single-family home on these easy buildable lots offering wide frontages. Buyers are advised to conduct their own research to ensure zoning compliance. This remarkable subdivision is located in the heart of Lakeview Heights, near many renowned wineries and wine trails. Just a quick 10-min drive from downtown Kelowna and close proximity to the beach, schools and shopping. No restriction on builders, Flexible building guideline and no time restriction allows you to customize and build at your own pace. The seller is open to the idea of extended completion and potentially starting construction prior to closing. Contact LR to further explore and discuss the specifics. CONCEPTUAL RENDERING IS SIMPLY A VISUAL REPRESENTATION OF THE POTENTIAL CONSTRUCTION THAT CAN BE DEVELOPED ON THE LAND. THIS IS A LOT SALE ONLY. GST applicable (id:6769)

Listing Presented By:



Originally Listed by:
RE/MAX Kelowna

RE/MAX Kelowna

RE/MAX Kelowna

100-1553 Harvey Avenue ,
Kelowna, BC, V1Y 6G1

Phone: 250-870-6145
dallas@remaxkelowna.com

The property information on this website is derived from the Canadian Real Estate Association's Data Distribution Facility (DDF®). DDF® references real estate listings held by various brokerage firms and franchisees. The accuracy of information is not guaranteed and should be independently verified. The trademarks REALTOR®, REALTORS® and the REALTOR® logo are controlled by The Canadian Real Estate Association (CREA) and identify real estate professionals who are members of CREA. The trademarks MLS®, Multiple Listing Service® and the associated logos are owned by CREA and identify the quality of services provided by real estate professionals who are members of CREA.