

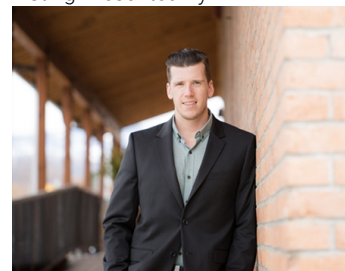


2205 Louie Drive 105 West Kelowna British Columbia

\$24

Position your business for success in this bright and attractive 450 sqft commercial space, ideally situated next to the highway. This location offers easy access to a variety of amenities, making it an ideal spot for commercial purposes. Surrounding facilities include major retailers like Walmart, London Drugs, Staples, and Real Canadian Superstore, all within close proximity. Nearby are several other amenities such as a Husky gas station and various dining and shopping options, providing added convenience for potential occupants or customers. (id:6769)

Listing Presented By:



Originally Listed by:
Coldwell Banker Horizon Realty

<http://www.rainegroup.ca/>

RE/MAX Kelowna

RE/MAX Kelowna

100-1553 Harvey Avenue ,
Kelowna, BC, V1Y 6G1

Phone: 250-870-6145
dallas@remaxkelowna.com

The property information on this website is derived from the Canadian Real Estate Association's Data Distribution Facility (DDF®). DDF® references real estate listings held by various brokerage firms and franchisees. The accuracy of information is not guaranteed and should be independently verified. The trademarks REALTOR®, REALTORS® and the REALTOR® logo are controlled by The Canadian Real Estate Association (CREA) and identify real estate professionals who are members of CREA. The trademarks MLS®, Multiple Listing Service® and the associated logos are owned by CREA and identify the quality of services provided by real estate professionals who are members of CREA.