



877 KLO Road 114 Kelowna British Columbia

\$440,000

Are you looking for one of the most highly sought-after retirement communities in Kelowna? HERE IT IS! Hawthorn Park is centrally located close to all amenities and a short stroll to the beach and parks. This end unit is on the first floor and steps to the elevator. The large storage locker is conveniently located on this floor as well. The unit itself is on the quiet side of the building overlooking the gardens and patio area. Two-bed, two-bath nearly 1100 sqft unit is in very good condition with BRAND NEW LUXURY VINYL - NO MORE CARPET. Bright, well-appointed kitchen and large, open concept living/dining area with 9' ceilings accentuate the comfortable, inviting space. Convenient in-suite laundry with stackable washer/dryer and the large primary bedroom is fashioned with a walk-through closet and 3-piece ensuite. Convenient, secure parking is the first spot beside the lobby entrance. Other conveniences include the pool and gym for a small monthly fee, library /billiards, and rentable guest suite. (id:6769)

Primary Bedroom 21' x 11'6"

4pc Bathroom 8'3" x 7'10"

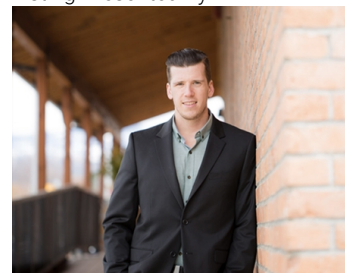
Bedroom 14'3" x 10'

3pc Ensuite bath 7' x 7'11"

Living room 22'5" x 19'

Kitchen 8'11" x 8'11"

Listing Presented By:



Originally Listed by:
Royal LePage Kelowna

<http://www.danbrownrealty.ca/>

RE/MAX Kelowna

RE/MAX Kelowna

100-1553 Harvey Avenue,
Kelowna, BC, V1Y 6G1

Phone: 250-870-6145
dallas@remaxkelowna.com

The property information on this website is derived from the Canadian Real Estate Association's Data Distribution Facility (DDF®). DDF® references real estate listings held by various brokerage firms and franchisees. The accuracy of information is not guaranteed and should be independently verified. The trademarks REALTOR®, REALTORS® and the REALTOR® logo are controlled by The Canadian Real Estate Association (CREA) and identify real estate professionals who are members of CREA. The trademarks MLS®, Multiple Listing Service® and the associated logos are owned by CREA and identify the quality of services provided by real estate professionals who are members of CREA.