



## 2040 Springfield Road 1203 Kelowna British Columbia

\$599,000

Experience unparalleled panoramic views from the 12th floor of Invue in Central Kelowna. This stunning 2-bedroom, 2-bathroom condo boasts south, west, and east exposures, offering distant lake vistas that will take your breath away. Enjoy the luxury of 2 spacious patios and 2 parking stalls, ensuring both convenience and comfort. Nestled at 1203-2040 Springfield Rd, this residence is conveniently located steps away from Orchard Park Mall, transit options, renowned restaurants, chic shops, and picturesque parks. With a split floor plan, privacy is guaranteed, providing an ideal layout for relaxation and entertainment. Priced to sell at an incredible value of \$599,000, this property presents a rare opportunity for investment. Currently tenanted on a month-to-month basis, seize the chance to own this coveted piece of Kelowna real estate while it lasts. (id:6769)

Full bathroom 5'6" x 8'0"

3pc Ensuite bath 5'6" x 12'0"

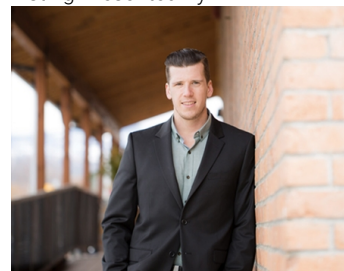
Bedroom 11'3" x 10'1"

Primary Bedroom 11'6" x 11'8"

Kitchen 13'0" x 9'8"

Living room 12'4" x 17'6"

Listing Presented By:



Originally Listed by:  
RE/MAX Kelowna

**RE/MAX** Kelowna

**RE/MAX Kelowna**

100-1553 Harvey Avenue ,  
Kelowna, BC, V1Y 6G1

Phone: 250-870-6145  
dallas@remaxkelowna.com

The property information on this website is derived from the Canadian Real Estate Association's Data Distribution Facility (DDF®). DDF® references real estate listings held by various brokerage firms and franchisees. The accuracy of information is not guaranteed and should be independently verified. The trademarks REALTOR®, REALTORS® and the REALTOR® logo are controlled by The Canadian Real Estate Association (CREA) and identify real estate professionals who are members of CREA. The trademarks MLS®, Multiple Listing Service® and the associated logos are owned by CREA and identify the quality of services provided by real estate professionals who are members of CREA.