



1220 Ethel Street Kelowna British Columbia

\$1,300,000

4 Home land assembly, must be sold with 1206, 1216, 1230 Ethel street (total list price \$5,450,000). Total assembly is .60 Acres in size consisting of 4 single family homes (3 of which have carriage homes). Total rental income for all 4 properties \$16,015/m tenants all pay own Electric/gas. City has previously stated that they would support MF3/CA1. Assembly sits in a Core Neighbourhood area (C-NHD) and lines a Transit Supportive Corridor in one of Kelowna's most sought after development areas. Jump on this rare opportunity to secure your legacy & contribution to downtown Kelowna's evolving skyline. 1 hour to Big White, 20 minutes to YLW international airport, 16 minutes to UBCO (along HWY 97) 2 minutes to the future downtown campus, & walking distance to groceries, shopping, restaurants, entertainment, parks, and beaches. Homes being sold ""as is where is."" Selling for LAND VALUE. (id:6769)

Partial bathroom Measurements not available

Full bathroom Measurements not available

Bedroom 1' x 1'

Bedroom 1' x 1'

Bedroom 1' x 1'

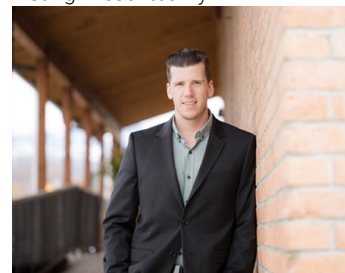
Primary Bedroom 1'0" x 1'0"

Full bathroom Measurements not available

Living room 1'0" x 1'0"

Kitchen 1'0" x 1'0"

Listing Presented By:



Originally Listed by:
Coldwell Banker Horizon Realty

<http://www.daviddelorme.com/>

RE/MAX Kelowna

RE/MAX Kelowna

100-1553 Harvey Avenue ,
Kelowna, BC, V1Y 6G1

Phone: 250-870-6145
dallas@remaxkelowna.com

The property information on this website is derived from the Canadian Real Estate Association's Data Distribution Facility (DDF®). DDF® references real estate listings held by various brokerage firms and franchisees. The accuracy of information is not guaranteed and should be independently verified. The trademarks REALTOR®, REALTORS® and the REALTOR® logo are controlled by The Canadian Real Estate Association (CREA) and identify real estate professionals who are members of CREA. The trademarks MLS®, Multiple Listing Service® and the associated logos are owned by CREA and identify the quality of services provided by real estate professionals who are members of CREA.