



1238 Kyndree Court Kelowna British Columbia

\$2,488,000

Sprawling over 1.347 acres this stunning property over looks Okanagan Lake and offers unobstructed views of the lake, mountains & valley. Massive kitchen, High End SS appliances, ample windows, wood cabinetry, granite countertops & open to dining room Living room features floor to ceiling windows, wood burning fireplace surrounded in natural stonework. Access to the lower deck and inground pool. Multiple outdoor decks provide plenty of space for lounging, dining & entertaining .Primary bedroom on main features a beautiful private ensuite w/views. An office and den complete this level. Secondary bedroom has a private balcony, open 5 pc ensuite and huge walk in closet. (id:6769)

5pc Ensuite bath 11'5" x 10'2"

Other 9'6" x 5'4"

Bedroom 15'2" x 15'0"

Utility room 10'9" x 13'4"

3pc Ensuite bath 7'3" x 6'4"

Den 11'6" x 15'1"

Laundry room 11'8" x 11'2"

Family room 15'6" x 21'0"

Kitchen 19'1" x 17'7"

Office 12'7" x 9'6"

4pc Ensuite bath 12'0" x 15'0"

Primary Bedroom 16'9" x 17'0"

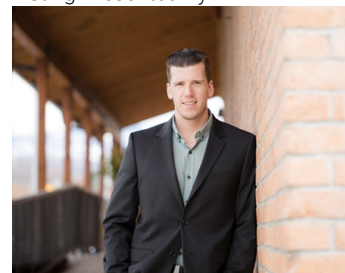
3pc Bathroom 9'1" x 9'6"

Dining room 15'8" x 13'6"

Living room 13'8" x 11'1"

Foyer 7'10" x 11'7"

Listing Presented By:



Originally Listed by:
RE/MAX Kelowna

<http://www.jesseeast.com/>

RE/MAX Kelowna

RE/MAX Kelowna

100-1553 Harvey Avenue ,
Kelowna, BC, V1Y 6G1

Phone: 250-870-6145
dallas@remaxkelowna.com

The property information on this website is derived from the Canadian Real Estate Association's Data Distribution Facility (DDF®). DDF® references real estate listings held by various brokerage firms and franchisees. The accuracy of information is not guaranteed and should be independently verified. The trademarks REALTOR®, REALTORS® and the REALTOR® logo are controlled by The Canadian Real Estate Association (CREA) and identify real estate professionals who are members of CREA. The trademarks MLS®, Multiple Listing Service® and the associated logos are owned by CREA and identify the quality of services provided by real estate professionals who are members of CREA.