

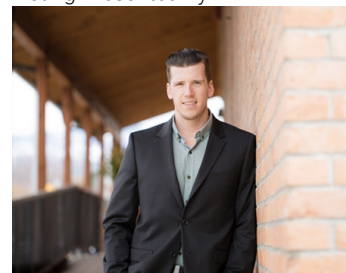


2540 Enterprise Way 128 Kelowna British Columbia

\$20

Versatile sublease opportunity in newly built building on Enterprise Way! This unit is comprised of 3,971 square feet of open, ground floor warehouse area with an additional 2,296 square feet of finished, enclosed mezzanine area. The unit includes an easily accessible 12' overhead door, man door entry, extensive glazing, 2 washrooms, 24' clearance and an abundance of unreserved on-site parking. Join an excellent existing tenant mix and take advantage of this well built, centrally located unit. C2 zoning provides opportunity for a wide array of users. Landlord may entertain a new head lease, pending review of the prospective tenant. (id:6769)

Listing Presented By:



Originally Listed by:
Venture Realty Corp.

RE/MAX Kelowna

RE/MAX Kelowna

100-1553 Harvey Avenue,
Kelowna, BC, V1Y 6G1

Phone: 250-870-6145
dallas@remaxkelowna.com

The property information on this website is derived from the Canadian Real Estate Association's Data Distribution Facility (DDF®). DDF® references real estate listings held by various brokerage firms and franchisees. The accuracy of information is not guaranteed and should be independently verified. The trademarks REALTOR®, REALTORS® and the REALTOR® logo are controlled by The Canadian Real Estate Association (CREA) and identify real estate professionals who are members of CREA. The trademarks MLS®, Multiple Listing Service® and the associated logos are owned by CREA and identify the quality of services provided by real estate professionals who are members of CREA.