



## 695 Webster Road 13 Kelowna British Columbia

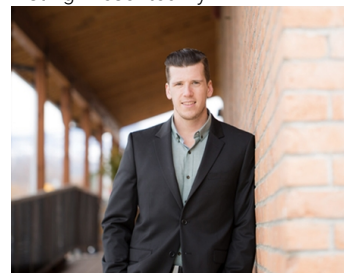
\$659,900

Welcome to this family townhome with a stunning view, offering 3 bedrooms and 3 bathrooms in a bright, and a functional layout. The main floor offers a kitchen with white cabinetry, granite countertops, stainless steel appliances, and recessed lighting, opening to spacious living and dining areas, with large windows and access to the covered patio. Upstairs are 3 spacious bedrooms with large closets, including a primary suite with a 5-piece ensuite and walk-in closet, plus a convenient laundry room with side-by-side washer and dryer. Enjoy outdoor living on the large covered deck with gas hookup or the expansive views. Additional highlights include built-in central vac, a single car garage plus 2 outside designated spots. This home is ideally located near schools, sports fields, YMCA, ice rinks, pool, and all essential amenities. (id:6769)

4pc Bathroom 5' x 8'11"  
5pc Ensuite bath 8'11" x 7'10"  
Primary Bedroom 14'11" x 12'6"  
Bedroom 9'2" x 14'  
Bedroom 9' x 13'6"  
Kitchen 15'2" x 8'11"

Dining room 15'2" x 8'11"  
Foyer 7' x 14'1"  
Living room 20'3" x 11'3"  
Utility room 5'9" x 3'2"  
2pc Bathroom 5' x 5'2"

Listing Presented By:



Originally Listed by:  
RE/MAX Kelowna

**RE/MAX Kelowna**

**RE/MAX Kelowna**

100-1553 Harvey Avenue ,  
Kelowna, BC, V1Y 6G1

Phone: 250-870-6145  
dallas@remaxkelowna.com

The property information on this website is derived from the Canadian Real Estate Association's Data Distribution Facility (DDF®). DDF® references real estate listings held by various brokerage firms and franchisees. The accuracy of information is not guaranteed and should be independently verified. The trademarks REALTOR®, REALTORS® and the REALTOR® logo are controlled by The Canadian Real Estate Association (CREA) and identify real estate professionals who are members of CREA. The trademarks MLS®, Multiple Listing Service® and the associated logos are owned by CREA and identify the quality of services provided by real estate professionals who are members of CREA.