

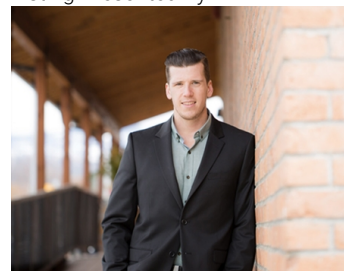


830 McCurdy Place 13 Kelowna British Columbia

\$17

4,032 sq. ft. industrial unit available for lease at McCurdy Place. The space includes a showroom, lunchroom, and 1 washroom, offering a functional mix of office and warehouse area. The warehouse features a floor drain, 1 overhead door at grade, and access to a nearby shared loading dock for additional loading convenience. Available May 1, 2026. Landlord is very particular and seeking clean users only. (id:6769)

Listing Presented By:



Originally Listed by:
REMAX Kelowna

RE/MAXKelowna

RE/MAX Kelowna

100-1553 Harvey Avenue,
Kelowna, BC, V1Y 6G1

Phone: 250-870-6145
dallas@remaxkelowna.com