



# 1310 Mary Court Kelowna British Columbia

\$924,800

The complete package! Fabulous family home that shows absolutely AAA both inside and out; second to none Spring Valley location tucked away on the renowned Mary Court. This home and property boast numerous extras and features including great room concept with 3 beds on main; 1 or 2 on lower level; summer kitchen with separate entry; many wonderful improvements thru out; large, covered deck plus second open deck leading out to your pool and hot tub; extremely private back yard and garden area; detached garage and workshop; RV parking; super convenient central location. Short distance to Mission Greenway, schools, shopping, amenities, and more. (id:6769)

Kitchen 11'3" x 11'

Den 14' x 10'0"

Family room 12'9" x 12'8"

Bedroom 12'8" x 10'2"

Bedroom 10'4" x 9'8"

Bedroom 12'8" x 10'2"

Partial bathroom Measurements not available

Full bathroom Measurements not available

Partial ensuite bathroom Measurements not available

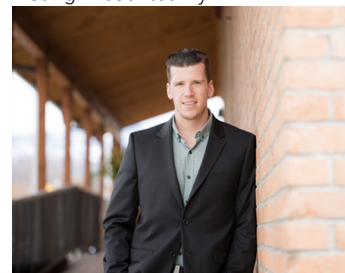
Primary Bedroom 12'6" x 10'5"

Living room 15'5" x 15'4"

Dining room 11'0" x 9'8"

Kitchen 11' x 10'9"

Listing Presented By:



Originally Listed by:  
Royal LePage Kelowna

<http://www.markjontz.com/>

**RE/MAX Kelowna**

**RE/MAX Kelowna**

100-1553 Harvey Avenue,  
Kelowna, BC, V1Y 6G1

Phone: 250-870-6145  
[dallas@remaxkelowna.com](mailto:dallas@remaxkelowna.com)

The property information on this website is derived from the Canadian Real Estate Association's Data Distribution Facility (DDF®). DDF® references real estate listings held by various brokerage firms and franchisees. The accuracy of information is not guaranteed and should be independently verified. The trademarks REALTOR®, REALTORS® and the REALTOR® logo are controlled by The Canadian Real Estate Association (CREA) and identify real estate professionals who are members of CREA. The trademarks MLS®, Multiple Listing Service® and the associated logos are owned by CREA and identify the quality of services provided by real estate professionals who are members of CREA.