



1850 Shannon lake Road 133 West Kelowna British Columbia

\$424,900

Discover this beautifully maintained double-wide manufactured home offering 1600 sq ft of comfort and convenience. You will find 2 Bed, 2 Baths, a formal dining area and a huge living room. This home also has a sunroom and a flex space that could be turned into another bedroom, gym or office space! Nestled at the quiet side and far end of the Crystal Springs park with no one behind you! Lots of privacy in the yard and walking trails right out your front door. This home boasts brand-new flooring, a roof updated in 2017, and ample storage with a dedicated shed, sunroom and carport. It's the perfect blend of tranquillity and accessibility! The park is pet-friendly, allowing one dog (up to 12 pounds or 14 inches tall) or one cat. Guests can stay in the park's available guest room, and a clubhouse is available for rent for your events. Additionally, the park has RV-size spaces for rent for motorhomes or boats. Furniture is negotiable (id:6769)

Bedroom '0" x '0"

Full bathroom '0" x '0"

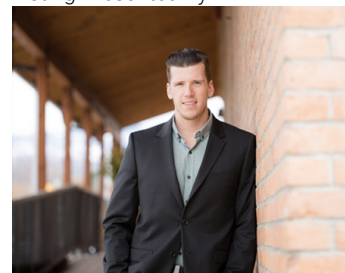
Primary Bedroom '0" x '0"

Full bathroom '0" x '0"

Living room ' x '

Kitchen ' x '

Listing Presented By:



Originally Listed by:
RE/MAX Kelowna

<http://braden@koopshomes.ca/>

RE/MAX Kelowna

RE/MAX Kelowna

100-1553 Harvey Avenue ,
Kelowna, BC, V1Y 6G1

Phone: 250-870-6145
dallas@remaxkelowna.com

The property information on this website is derived from the Canadian Real Estate Association's Data Distribution Facility (DDF®). DDF® references real estate listings held by various brokerage firms and franchisees. The accuracy of information is not guaranteed and should be independently verified. The trademarks REALTOR®, REALTORS® and the REALTOR® logo are controlled by The Canadian Real Estate Association (CREA) and identify real estate professionals who are members of CREA. The trademarks MLS®, Multiple Listing Service® and the associated logos are owned by CREA and identify the quality of services provided by real estate professionals who are members of CREA.