



# 1355/1357 Sylvania Crescent Kelowna British Columbia

\$1,249,000

Calling all investors! This is a 8 bedroom, 4 bathroom full duplex on a 0.26 acre lot! One side has been largely remodelled and currently vacant, while the other side is currently rented out to tenants that would love to stay! Having one side vacant makes this duplex very versatile for any buyer! Conveniently located near a grocery store, park, school, doctor offices, and Enterprise's business district, this location makes daily life easy. This property is ready for it's new owner. Book your showing today! (id:6769)

Office 9'1" x 9'

Bedroom 10'7" x 9'1"

Kitchen 11'6" x 9'1"

4pc Bathroom 8'2" x 7'5"

Bedroom 11'11" x 11'1"

Family room 19'4" x 12'5"

3pc Bathroom Measurements not available

Bedroom 10'5" x 9'1"

Kitchen 9' x 6'8"

Bedroom 11'1" x 10'11"

Family room 19'3" x 12'5"

4pc Bathroom 9'3" x 7'4"

Bedroom 14'8" x 9'4"

Primary Bedroom 12'9" x 11'6"

Dining room 10' x 9'5"

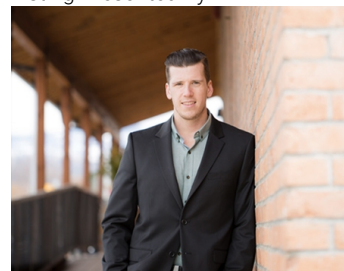
Kitchen 10'6" x 9'5"

Living room 19'10" x 12'7"

4pc Bathroom Measurements not available

Bedroom 14'5" x 9'2"

Listing Presented By:



Originally Listed by:  
RE/MAX Kelowna

**RE/MAX Kelowna**

**RE/MAX Kelowna**

100-1553 Harvey Avenue ,  
Kelowna, BC, V1Y 6G1

Phone: 250-870-6145  
dallas@remaxkelowna.com

The property information on this website is derived from the Canadian Real Estate Association's Data Distribution Facility (DDF®). DDF® references real estate listings held by various brokerage firms and franchisees. The accuracy of information is not guaranteed and should be independently verified. The trademarks REALTOR®, REALTORS® and the REALTOR® logo are controlled by The Canadian Real Estate Association (CREA) and identify real estate professionals who are members of CREA. The trademarks MLS®, Multiple Listing Service® and the associated logos are owned by CREA and identify the quality of services provided by real estate professionals who are members of CREA.