

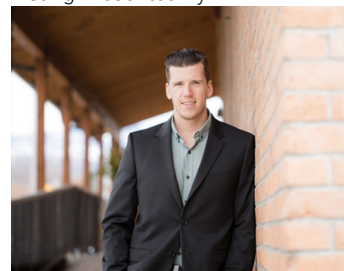


1423 Bear Creek Road West Kelowna British Columbia

\$499,900

Imagine waking up to breathtaking lake and city views every morning! This prime piece of land in the highly sought-after Bear Creek offers the perfect canvas for your dream home. Nestled in a serene, nature-filled environment, you'll be surrounded by lush trees and vibrant wildlife, all while being just minutes from urban conveniences. With ample space to design your dream home, don't miss this rare opportunity to create your own oasis in a fantastic neighbourhood. You can build up to 6,000 sq ft, offering limitless possibilities for your vision! Feature Picture: This rendering showcases a potential home design for a prime lot that backs onto protected agricultural land, ensuring serene views and privacy. Enjoy direct access to well-established hiking trails winding through pristine forests. Key Highlights: Utilities: All utilities are at the lot line, making for a hassle-free build. Lot Features: This level lot is at a build-ready elevation, perfect for your dream home. Preparedness: Comprehensive surveys, geotechnical, and environmental reports have been completed within the last year. Plans for a retaining wall are also available. Location: Just 7 minutes from downtown Kelowna, with desirable schools in the catchment area. (id:6769)

Listing Presented By:



Originally Listed by:
RE/MAX Kelowna

RE/MAX Kelowna

RE/MAX Kelowna

100-1553 Harvey Avenue ,
Kelowna, BC, V1Y 6G1

Phone: 250-870-6145
dallas@remaxkelowna.com

The property information on this website is derived from the Canadian Real Estate Association's Data Distribution Facility (DDF®). DDF® references real estate listings held by various brokerage firms and franchisees. The accuracy of information is not guaranteed and should be independently verified. The trademarks REALTOR®, REALTORS® and the REALTOR® logo are controlled by The Canadian Real Estate Association (CREA) and identify real estate professionals who are members of CREA. The trademarks MLS®, Multiple Listing Service® and the associated logos are owned by CREA and identify the quality of services provided by real estate professionals who are members of CREA.