



1485 Highland Drive Kelowna British Columbia

\$1,199,000

A RARE FIND IN GLENMORE! Wonderful opportunity to own this massive 9,583 square foot lot of development space with 73 feet of frontage and 120 feet of LANE ACCESS TO DUGGAN PARK! The property has been zoned to MF1 - Infill Housing, which allows up to six dwelling units. A Development Permit Application is required to confirm that the setbacks, parking, height, etc. works under the updated bylaw. Located in the new C-NHD future land use and 1/2 block away from the Bernard Avenue traffic corridor. Cute and very livable older home that could be a great rental. (id:6769)

Full bathroom 6'5" x 4'10"

Bedroom 9'10" x 9'5"

Bedroom 11'11" x 9'9"

Family room 17'1" x 8'5"

Full bathroom 13'4" x 6'2"

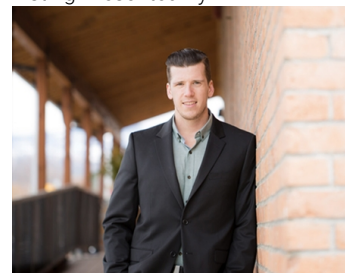
Primary Bedroom 13'4" x 9'5"

Kitchen 13'3" x 8'8"

Dining room 11'3" x 8'10"

Living room 17'11" x 11'2"

Listing Presented By:



Originally Listed by:
RE/MAX Kelowna

RE/MAX Kelowna

RE/MAX Kelowna

100-1553 Harvey Avenue ,
Kelowna, BC, V1Y 6G1

Phone: 250-870-6145
dallas@remaxkelowna.com

The property information on this website is derived from the Canadian Real Estate Association's Data Distribution Facility (DDF®). DDF® references real estate listings held by various brokerage firms and franchisees. The accuracy of information is not guaranteed and should be independently verified. The trademarks REALTOR®, REALTORS® and the REALTOR® logo are controlled by The Canadian Real Estate Association (CREA) and identify real estate professionals who are members of CREA. The trademarks MLS®, Multiple Listing Service® and the associated logos are owned by CREA and identify the quality of services provided by real estate professionals who are members of CREA.