



316 Whitman Road 15 Kelowna British Columbia

\$725,000

Welcome to the popular Le Mirage complex in North Glenmore. Immaculate and updated 3 bedroom corner unit townhome with tons of tasteful upgrades is conveniently located beside grocery stores, shopping, restaurants, playgrounds, schools, and private walking trail right outside your back door. Wide open main floor plan with private patio area great for relaxing. Attached garage space, extra storage room in concreted crawl area. Excellent run strata and no age restrictions here. Pets are welcome with standard restrictions. No hustle bustle in this neighborhood. Home shows immaculate and quick possession is available. Call LS for more info or a private tour. (id:6769)

4pc Ensuite bath 5'10" x 7'8"

4pc Bathroom 8'5" x 4'11"

Family room 11'9" x 9'

Bedroom 13'2" x 9'9"

Bedroom 12' x 9'4"

Primary Bedroom 14'8" x 13'2"

2pc Bathroom 7' x 4'6"

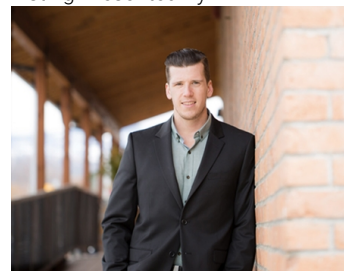
Laundry room 6'10" x 5'11"

Kitchen 12' x 8'

Dining room 9' x 10'

Living room 14'8" x 13'3"

Listing Presented By:



Originally Listed by:
Royal LePage Locations West

RE/MAX Kelowna

RE/MAX Kelowna

100-1553 Harvey Avenue ,
Kelowna, BC, V1Y 6G1

Phone: 250-870-6145
dallas@remaxkelowna.com

The property information on this website is derived from the Canadian Real Estate Association's Data Distribution Facility (DDF®). DDF® references real estate listings held by various brokerage firms and franchisees. The accuracy of information is not guaranteed and should be independently verified. The trademarks REALTOR®, REALTORS® and the REALTOR® logo are controlled by The Canadian Real Estate Association (CREA) and identify real estate professionals who are members of CREA. The trademarks MLS®, Multiple Listing Service® and the associated logos are owned by CREA and identify the quality of services provided by real estate professionals who are members of CREA.