

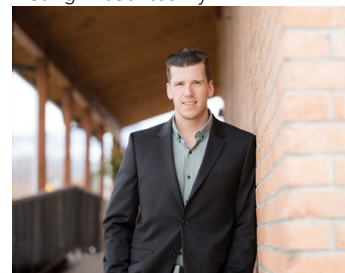


1635 Abbott Street Kelowna British Columbia

\$5,900,000

Exceptional rare opportunity to acquire a fully tenanted 15,200 sq. ft 2 story Professional Office Building and an additional parking lot in the downtown core of Kelowna. This is high-profile location on the corner of Abbott Street and Leon Avenue just across the street from Kelowna's City Park and Okanagan Lake and consists of 2 Lots totaling .44 acre. The properties are zoned UC1 (Downtown Urban Core) under the Zoning Bylaw No 12375 allowing for High-Density Mixed-Use Buildings. (id:6769)

Listing Presented By:



Originally Listed by:
Royal LePage Kelowna

RE/MAX Kelowna

RE/MAX Kelowna

100-1553 Harvey Avenue ,
Kelowna, BC, V1Y 6G1

Phone: 250-870-6145
dallas@remaxkelowna.com

The property information on this website is derived from the Canadian Real Estate Association's Data Distribution Facility (DDF®). DDF® references real estate listings held by various brokerage firms and franchisees. The accuracy of information is not guaranteed and should be independently verified. The trademarks REALTOR®, REALTORS® and the REALTOR® logo are controlled by The Canadian Real Estate Association (CREA) and identify real estate professionals who are members of CREA. The trademarks MLS®, Multiple Listing Service® and the associated logos are owned by CREA and identify the quality of services provided by real estate professionals who are members of CREA.