

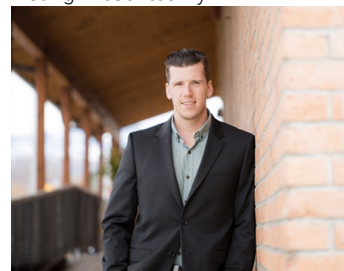


172 Skyland Drive Kelowna British Columbia

\$2,689,000

Completely renovated from top to bottom, this breathtaking residence embodies refined living in Wilden--Kelowna's most coveted enclave. The striking modern exterior with crisp white & black accents makes a bold statement, setting the stage for the exceptional design inside. Expansive windows frame captivating lake & mountain views, while soaring ceilings & a stunning floor-to-ceiling fireplace create a grand yet inviting atmosphere. The designer kitchen is a showpiece, featuring a massive Dekton island, 6-burner Thermador range, butler's pantry, beverage centre & seamless flow to the covered deck--ideal for entertaining. Upstairs, the primary suite is a private sanctuary with sweeping views & an ensuite that rivals a luxury spa, complete with heated floors & a double rain shower. Two additional bedrooms & a full bath complete the upper floor. The lower level offers ultimate versatility with engineered hardwood: an elegant family lounge, custom wine cellar, gym space, guest bedroom & a bathroom with direct access to the outdoor retreat. Step outside to the saltwater pool with auto cover, hot tub & multiple lounging areas--surrounded by protected green space for unparalleled privacy. Notable features include real hardwood throughout the rest of the home, a 3-zone furnace, 240V EV-ready 3-car garage, electric window coverings, UV-filtering windows & solid 8ft doors. A true legacy home--where sophisticated design meets everyday comfort in an irreplaceable setting. (id:6769)

Listing Presented By:



Originally Listed by:
RE/MAX Kelowna - Stone Sisters

RE/MAX Kelowna

RE/MAX Kelowna

100-1553 Harvey Avenue ,
Kelowna, BC, V1Y 6G1

Phone: 250-870-6145
dallas@remaxkelowna.com

Bedroom 15'7" x 11'6"

Bedroom 13'10" x 13'11"

Full bathroom Measurements not available

Full ensuite bathroom Measurements not available

Primary Bedroom 14'0" x 15'4"

Full bathroom Measurements not available

Wine Cellar 10'6" x 16'3"

Bedroom 13'11" x 10'4"

Recreation room

Family room 13'11" x 16'8"

Office 13'0" x 14'2"

Partial bathroom Measurements not available

Laundry room 7'3" x 9'4"

Pantry 8'10" x 9'4"

Kitchen 19'4" x 15'3"

Dining room 10'8" x 15'3"

Living room 14'3" x 16'8"

The property information on this website is derived from the Canadian Real Estate Association's Data Distribution Facility (DDF®). DDF® references real estate listings held by various brokerage firms and franchisees. The accuracy of information is not guaranteed and should be independently verified. The REALTOR®, REALTORS® and the REALTOR® logo are controlled by The Canadian Real Estate Association (CREA) and identify real estate professionals who are members of CREA. The trademarks MLS®, Multiple Listing Service® and the associated logos are owned by CREA and identify the quality of services provided by real estate professionals who are members of CREA.