



## 1550 Union Road 18 Kelowna British Columbia

\$879,900

For more information, please click Brochure button. Discover refined lakeside living in this corner Juniper townhouse featuring 1,873 sq. ft. of contemporary comfort in the Warm Nordic colour palette. With 3 bedrooms, a flex/storage room, and 3 bathrooms, this home combines thoughtful design with an intimate atmosphere. The double side-by-side garage ensures convenience, while the private, partially covered rooftop terrace offers serene views of the surrounding park. GST applicable. Located just 10 minutes from downtown Kelowna and the airport, Pondside Landing is part of a vibrant Wilden community surrounded by scenic trails and nature. Future amenities include the Wilden Market Square and Wilden Elementary School, both just steps away. All measurements are approximate. (id:6769)

Kitchen 9'9" x 11'10"

Dining nook 9'2" x 11'6"

2pc Bathroom Measurements not available

Dining room 13'1" x 10'8"

Living room 12'4" x 13'0"

4pc Ensuite bath Measurements not available

Primary Bedroom 10'7" x 11'0"

Laundry room 9'2" x 5'1"

3pc Bathroom Measurements not available

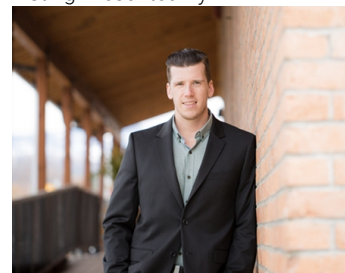
Bedroom 9'10" x 11'10"

Bedroom 9'8" x 8'8"

Storage 12'3" x 10'1"

Utility room 5'3" x 8'0"

Listing Presented By:



Originally Listed by:  
Easy List Realty

<http://www.easylistrealty.ca/>

**RE/MAX Kelowna**

**RE/MAX Kelowna**

100-1553 Harvey Avenue ,  
Kelowna, BC, V1Y 6G1

Phone: 250-870-6145  
[dallas@remaxkelowna.com](mailto:dallas@remaxkelowna.com)

The property information on this website is derived from the Canadian Real Estate Association's Data Distribution Facility (DDF®). DDF® references real estate listings held by various brokerage firms and franchisees. The accuracy of information is not guaranteed and should be independently verified. The trademarks REALTOR®, REALTORS® and the REALTOR® logo are controlled by The Canadian Real Estate Association (CREA) and identify real estate professionals who are members of CREA. The trademarks MLS®, Multiple Listing Service® and the associated logos are owned by CREA and identify the quality of services provided by real estate professionals who are members of CREA.