

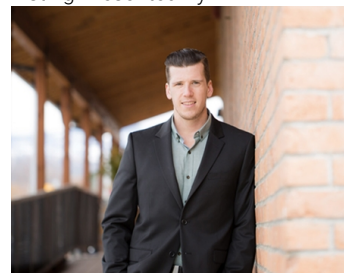


145 Asher Road 203 Kelowna British Columbia

\$1,375

Here is 624 sq. ft of office space with 2 separate rooms, reception and elevator access, in the Rutland Urban Centre just opposite the busy Plaza 33. Shared washrooms are in the hallway. This building is only a 2-minute walk from the Rutland Exchange bus terminal making access for your staff and clientele a breeze. There is ample free parking in a large city-owned lot immediately behind the building. UC4 zoning will allow for a multitude of commercial and office uses. Landlord is offering a Gross Lease but with utilities being the responsibility of the tenant. The use must be quiet as not to disturb the downstairs tenant. (id:6769)

Listing Presented By:



Originally Listed by:
Coldwell Banker Horizon Realty

RE/MAX Kelowna

RE/MAX Kelowna

100-1553 Harvey Avenue ,
Kelowna, BC, V1Y 6G1

Phone: 250-870-6145
dallas@remaxkelowna.com

The property information on this website is derived from the Canadian Real Estate Association's Data Distribution Facility (DDF®). DDF® references real estate listings held by various brokerage firms and franchisees. The accuracy of information is not guaranteed and should be independently verified. The trademarks REALTOR®, REALTORS® and the REALTOR® logo are controlled by The Canadian Real Estate Association (CREA) and identify real estate professionals who are members of CREA. The trademarks MLS®, Multiple Listing Service® and the associated logos are owned by CREA and identify the quality of services provided by real estate professionals who are members of CREA.