



3426 Hemlock Street 203 Penticton British Columbia

\$310,000

Welcome to Paradise Court, located in a highly-desirable residential neighbourhood just a few minutes' walk to Skaha Lake. This beautifully appointed second floor two bedroom and on bathroom condo features a cozy, private covered balcony with mountain views along many recent updates. Enjoy the newer kitchen appliances, tile back-splash, washer, dryer, hot water tank, quality blinds on the balcony and laminate flooring. The kitchen and bathroom feature custom Medallion Cabinets. Two windows and the balcony sliding door have also been replaced. This unit is in immaculate condition and is move-in ready. Located a short walking distance from the park and beaches along Skaha Lake, shops, restaurants, and the Marina. One covered parking stall plus storage locker and secure bike storage. All ages welcome and rentals are allowed. Sorry no pets allowed. Contingent upon Probate. Call Listing Agent for more details. (id:6769)

4pc Bathroom 8'6" x 4'11"

Bedroom 13' x 9'1"

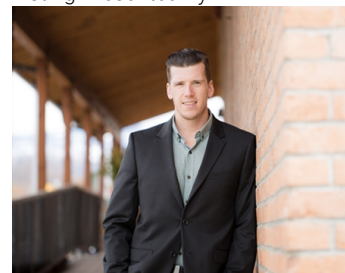
Primary Bedroom 14'9" x 14'1"

Living room 13'8" x 13'3"

Dining room 10'4" x 9'10"

Kitchen 9'10" x 9'

Listing Presented By:



Originally Listed by:
Front Street Realty

<https://jeffqueen.ca/>

RE/MAX Kelowna

RE/MAX Kelowna

100-1553 Harvey Avenue,
Kelowna, BC, V1Y 6G1

Phone: 250-870-6145
dallas@remaxkelowna.com

The property information on this website is derived from the Canadian Real Estate Association's Data Distribution Facility (DDF®). DDF® references real estate listings held by various brokerage firms and franchisees. The accuracy of information is not guaranteed and should be independently verified. The trademarks REALTOR®, REALTORS® and the REALTOR® logo are controlled by The Canadian Real Estate Association (CREA) and identify real estate professionals who are members of CREA. The trademarks MLS®, Multiple Listing Service® and the associated logos are owned by CREA and identify the quality of services provided by real estate professionals who are members of CREA.