



2470 Tuscany Drive 204 West Kelowna British Columbia

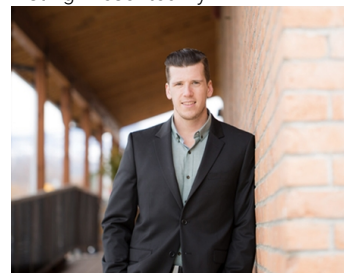
\$519,000

Surrounded by nature but close to the City! The view & serenity of this executive 2 bed/2 bath condo has to be experienced to be understood. Located above the 13th green of the Shannon Lake Golf Course, this south-facing, second-floor home enjoys almost 300 square feet of covered deck with a view over the pine trees and manicured golf course. Shannon Lake and Okanagan Lake finish off the 180 degree vista to the right. The well-designed kitchen with granite counters & sit-around island is open to the expansive dining and living rooms. Your master bedroom includes a spacious, two-sided walk-thru closet that leads to the spacious master ensuite. Deck includes natural gas outlet for BBQ. They called this Tuscany Drive for a reason! Elegance, stunning views and just minutes to downtown Westbank! Come see why you need to call this amazing condo home. (id:6769)

Utility room 3'4" x 2'10"
 Laundry room 6'8" x 6'2"
 Dining room 11'3" x 9'5"
 Bedroom 11' x 10'
 4pc Bathroom 7'6" x 5'9"

4pc Ensuite bath 8'9" x 6'8"
 Primary Bedroom 14'5" x 11'4"
 Living room 21'7" x 17'
 Kitchen 11'3" x 8'11"

Listing Presented By:



Originally Listed by:
 Macdonald Realty Interior

<http://www.kelownadoris.com/>

RE/MAX Kelowna

RE/MAX Kelowna

100-1553 Harvey Avenue ,
 Kelowna, BC, V1Y 6G1

Phone: 250-870-6145
dallas@remaxkelowna.com

The property information on this website is derived from the Canadian Real Estate Association's Data Distribution Facility (DDF®). DDF® references real estate listings held by various brokerage firms and franchisees. The accuracy of information is not guaranteed and should be independently verified. The trademarks REALTOR®, REALTORS® and the REALTOR® logo are controlled by The Canadian Real Estate Association (CREA) and identify real estate professionals who are members of CREA. The trademarks MLS®, Multiple Listing Service® and the associated logos are owned by CREA and identify the quality of services provided by real estate professionals who are members of CREA.