



1610 Gordon Drive 205 Kelowna British Columbia

\$324,900

Well maintained 2 bedroom 2 bath in ROYAL OAK! Spacious kitchen with lots of wood cabinetry, double sinks and space for a dinette table or desk. Formal dining area conveniently off the kitchen open to the living room that features a glass patio doors and a spacious enclosed deck can be enjoyed year round. Large master bedroom, walk-thru closet & 5 price ensuite w/tub-shower combo. Vanity provides ample storage & countertop space. Roomy second bedroom, 3 piece main bath and laundry room in suite. Entry way closet w/mirrored doors carries natural light throughout and NEW laminate flooring. Building amenities feature a common room with full kitchen and games room with ping pong table. Secure underground parking space. 55+ building in prime location; 5 minute walk to Capri mall that has a grocery store, food court, bowling alley & shopping. (id:6769)

Laundry room 9'4" x 5'4"

3pc Bathroom 7'2" x 7'5"

Bedroom 10'1" x 12'0"

4pc Ensuite bath 5'0" x 8'8"

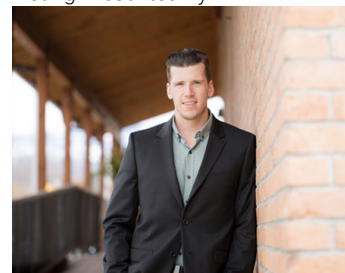
Primary Bedroom 13'0" x 14'1"

Kitchen 10'1" x 10'3"

Dining room 8'8" x 10'7"

Living room 15'1" x 15'11"

Listing Presented By:



Originally Listed by:
RE/MAX Kelowna

<http://www.jesseeast.com/>

RE/MAX Kelowna

RE/MAX Kelowna

100-1553 Harvey Avenue,
Kelowna, BC, V1Y 6G1

Phone: 250-870-6145
dallas@remaxkelowna.com

The property information on this website is derived from the Canadian Real Estate Association's Data Distribution Facility (DDF®). DDF® references real estate listings held by various brokerage firms and franchisees. The accuracy of information is not guaranteed and should be independently verified. The trademarks REALTOR®, REALTORS® and the REALTOR® logo are controlled by The Canadian Real Estate Association (CREA) and identify real estate professionals who are members of CREA. The trademarks MLS®, Multiple Listing Service® and the associated logos are owned by CREA and identify the quality of services provided by real estate professionals who are members of CREA.