



# 3225 Shannon Lake Road 21 West Kelowna British Columbia

\$359,000

This home is a testament to pride of ownership, with numerous updates to enjoy. Key upgrades include a 2024 roof, a 2021 furnace, a Whirlpool washer and dryer (2024), and newer windows that enhance both style and energy efficiency. The open-concept living and kitchen area leads to a covered deck through an oversized sliding door, creating a cozy space for winter relaxation with a blanket and warm drink. The large kitchen shines with stainless steel appliances, including a new hood fan and dishwasher. The oversized primary bedroom includes a walk-in closet and ensuite, while two additional large bedrooms provide extra comfort. With an attached garage and a spacious lot, tons of parking and ideal for summer BBQs and family gatherings, this home is ready for its next chapter. (id:6769)

Other 13'8" x 19'5"

Laundry room 9'11" x 5'9"

4pc Bathroom 7'5" x 5'2"

Primary Bedroom 13'3" x 11'2"

4pc Ensuite bath 8' x 5'

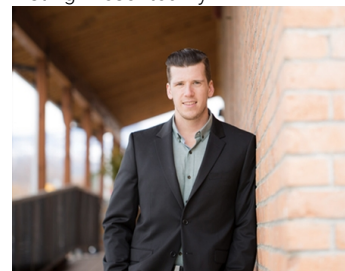
Den 11'3" x 10'11"

Bedroom 13'2" x 9'

Kitchen 13'2" x 14'11"

Living room 13'2" x 12'9"

Listing Presented By:



Originally Listed by:  
Coldwell Banker Horizon Realty

<http://www.saveriotumato.com/>

**RE/MAX Kelowna**

**RE/MAX Kelowna**

100-1553 Harvey Avenue,  
Kelowna, BC, V1Y 6G1

Phone: 250-870-6145  
[dallas@remaxkelowna.com](mailto:dallas@remaxkelowna.com)

The property information on this website is derived from the Canadian Real Estate Association's Data Distribution Facility (DDF®). DDF® references real estate listings held by various brokerage firms and franchisees. The accuracy of information is not guaranteed and should be independently verified. The trademarks REALTOR®, REALTORS® and the REALTOR® logo are controlled by The Canadian Real Estate Association (CREA) and identify real estate professionals who are members of CREA. The trademarks MLS®, Multiple Listing Service® and the associated logos are owned by CREA and identify the quality of services provided by real estate professionals who are members of CREA.