

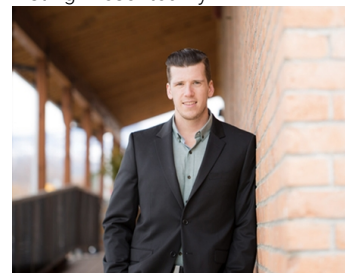


## 1579 Sutherland Avenue 210 Kelowna British Columbia

\$845

Now available for lease: a practical 338 SF open workspace in the same building near the Landmark District. Located on Sutherland Avenue, this unit offers an affordable rate in a central, accessible location. Ideal for small businesses or those just looking for a private office, the space is straightforward and adaptable to various needs. A great choice for those seeking a cost-effective office solution in a prime area. Possibility to lease with neighboring unit to make a larger square footage (adjoining door already in place). (id:6769)

Listing Presented By:



Originally Listed by:  
Venture Realty Corp.

**RE/MAX**Kelowna

**RE/MAX Kelowna**

100-1553 Harvey Avenue ,  
Kelowna, BC, V1Y 6G1

Phone: 250-870-6145  
dallas@remaxkelowna.com

The property information on this website is derived from the Canadian Real Estate Association's Data Distribution Facility (DDF®). DDF® references real estate listings held by various brokerage firms and franchisees. The accuracy of information is not guaranteed and should be independently verified. The trademarks REALTOR®, REALTORS® and the REALTOR® logo are controlled by The Canadian Real Estate Association (CREA) and identify real estate professionals who are members of CREA. The trademarks MLS®, Multiple Listing Service® and the associated logos are owned by CREA and identify the quality of services provided by real estate professionals who are members of CREA.