



210 Pisces Road Kelowna British Columbia

\$889,000

Located on a quiet cul-de-sac in Rutland, this family-friendly home offers the perfect blend of comfort, space, and versatility. The main level features three bedrooms, while the lower level includes a two-bedroom suite (non-legal), ideal for extended family or added income potential. Enjoy a private backyard oasis complete with an in-ground pool--perfect for relaxing or entertaining during Okanagan summers. With ample parking, including space for an RV or trailer, this property offers convenience for families with all the extras. The house is walking distance to schools, parks and mission creek trail. Please book a private viewing at your earliest convenience. (id:6769)

Utility room 12'11" x 17'5"

Recreation room 12'11" x 15'2"

4pc Bathroom 7'7" x 6'8"

Primary Bedroom 10'9" x 15'4"

Living room 14'3" x 16'

Kitchen 10'9" x 13'10"

Dining room 10'9" x 8'6"

Other 4'9" x 1'11"

Bedroom 10'11" x 10'

Bedroom 10'11" x 9'11"

4pc Bathroom 6'2" x 7'1"

2pc Ensuite bath 4'1" x 7'1"

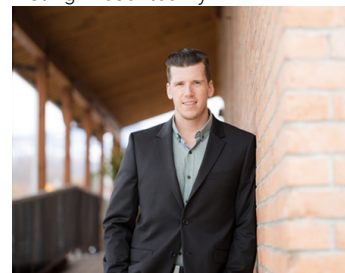
Kitchen 10'11" x 11'6"

Living room 11'4" x 11'6"

Bedroom 10'11" x 11'4"

Bedroom 12'11" x 10'11"

Listing Presented By:



Originally Listed by:
REMAX Kelowna

<http://www.chrisdockstader.com/>

RE/MAX Kelowna

RE/MAX Kelowna

100-1553 Harvey Avenue,
Kelowna, BC, V1Y 6G1

Phone: 250-870-6145
dallas@remaxkelowna.com

The property information on this website is derived from the Canadian Real Estate Association's Data Distribution Facility (DDF®). DDF® references real estate listings held by various brokerage firms and franchisees. The accuracy of information is not guaranteed and should be independently verified. The trademarks REALTOR®, REALTORS® and the REALTOR® logo are controlled by The Canadian Real Estate Association (CREA) and identify real estate professionals who are members of CREA. The trademarks MLS®, Multiple Listing Service® and the associated logos are owned by CREA and identify the quality of services provided by real estate professionals who are members of CREA.