



## 400 Sutton Crescent 215 Kelowna British Columbia

\$339,900

Discover this desirable south-facing condo in the highly sought-after Glenmore neighborhood! This spacious 1-bedroom, 1-bathroom unit offers a comfortable layout perfect for singles or couples. Located in a well-managed strata with reasonable fees that include hot water, this home provides excellent value. Enjoy the convenience of being within walking distance to parks, grocery stores, restaurants, coffee shops, and medical offices, with a short drive to the university or downtown. Pet-friendly policy allows for one cat or one dog of any size (excluding vicious breeds), making it an ideal choice for pet lovers. (id:6769)

Living room 11'10" x 18'10"

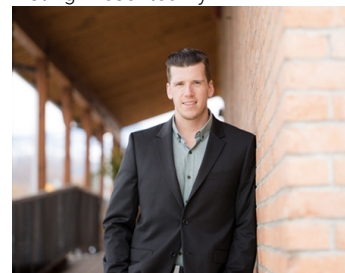
Full bathroom 4'11" x 9'1"

Dining room 11'10" x 7'11"

Primary Bedroom 12'2" x 14'2"

Kitchen 9'11" x 9'1"

Listing Presented By:



Originally Listed by:  
Royal LePage Kelowna

<http://www.reuterrealestate.com/>

**RE/MAX Kelowna**

**RE/MAX Kelowna**

100-1553 Harvey Avenue,  
Kelowna, BC, V1Y 6G1

Phone: 250-870-6145  
[dallas@remaxkelowna.com](mailto:dallas@remaxkelowna.com)

The property information on this website is derived from the Canadian Real Estate Association's Data Distribution Facility (DDF®). DDF® references real estate listings held by various brokerage firms and franchisees. The accuracy of information is not guaranteed and should be independently verified. The trademarks REALTOR®, REALTORS® and the REALTOR® logo are controlled by The Canadian Real Estate Association (CREA) and identify real estate professionals who are members of CREA. The trademarks MLS®, Multiple Listing Service® and the associated logos are owned by CREA and identify the quality of services provided by real estate professionals who are members of CREA.