



## 235 Ponto Road Kelowna British Columbia

\$950,000

LAND ASSEMBLY! DEVELOPMENT ALERT! FOUR DOORS! Zoned UC4 in up-and-coming Rutland's Urban Centre with possible permitted uses including townhouses, stacked townhouses, apartment housing - up to 6 stories. New to Rutland? Check out the website: <https://www.ourrutland.ca> Great potential, don't miss out on this opportunity! 2 bedrooms up and 2 bedroom suite down (not legal). Easy access to Highway 33. Walking distance to Shopping plaza 33 and Centennial Park. Minutes to YMCA, schools, UBCO, and Airport. (id:6769)

Bedroom 12'0" x 11'0"

Full bathroom Measurements not available

Bedroom 11'0" x 10'0"

Kitchen 14'0" x 10'0"

Full bathroom Measurements not available

Bedroom 12'0" x 10'0"

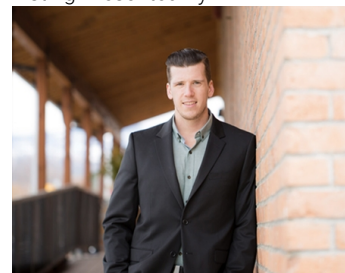
Primary Bedroom 13'0" x 12'0"

Dining room 12'0" x 8'0"

Kitchen 12'0" x 9'0"

Living room 15'0" x 14'0"

Listing Presented By:



Originally Listed by:  
Stilhavn Real Estate Services

<http://www.jaybree.ca/>

**RE/MAX Kelowna**

**RE/MAX Kelowna**

100-1553 Harvey Avenue ,  
Kelowna, BC, V1Y 6G1

Phone: 250-870-6145  
[dallas@remaxkelowna.com](mailto:dallas@remaxkelowna.com)

The property information on this website is derived from the Canadian Real Estate Association's Data Distribution Facility (DDF®). DDF® references real estate listings held by various brokerage firms and franchisees. The accuracy of information is not guaranteed and should be independently verified. The trademarks REALTOR®, REALTORS® and the REALTOR® logo are controlled by The Canadian Real Estate Association (CREA) and identify real estate professionals who are members of CREA. The trademarks MLS®, Multiple Listing Service® and the associated logos are owned by CREA and identify the quality of services provided by real estate professionals who are members of CREA.