



240 Petch Road Kelowna British Columbia

\$1,550,000

INVESTOR AND DEVELOPER ALERT! This 6-lot land assembly located on Hollywood Road South and Petch Road in Rutland South. It is situated within the Rutland Urban Centre, UC4 zoning, with 85-100% site coverage, 1.26 acres (around 54,886 sqft) in total. This land assembly holds immense potential for a 4-6 story mixed-use commercial and residential development and is within walking distance to all levels of schools, shops, parks and transit and just a short drive to UBCO and Kelowna International Airport. 3 additional lots totalling 0.922 acres (approximately 40,162 square feet) are also available for purchase MLS# 10308405 (id:6769)

Living room 10'0" x 10'0"

Kitchen 10'0" x 10'0"

Full bathroom 10'0" x 10'0"

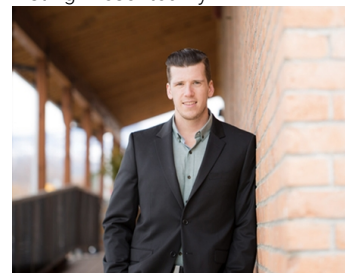
Bedroom 10'0" x 10'0"

Bedroom 10'0" x 10'0"

Bedroom 10'0" x 10'0"

Primary Bedroom 10'0" x 10'0"

Listing Presented By:



Originally Listed by:
Oakwyn Realty Okanagan-Letnick
Estates

RE/MAX Kelowna

RE/MAX Kelowna

100-1553 Harvey Avenue,
Kelowna, BC, V1Y 6G1

Phone: 250-870-6145
dallas@remaxkelowna.com

The property information on this website is derived from the Canadian Real Estate Association's Data Distribution Facility (DDF®). DDF® references real estate listings held by various brokerage firms and franchisees. The accuracy of information is not guaranteed and should be independently verified. The trademarks REALTOR®, REALTORS® and the REALTOR® logo are controlled by The Canadian Real Estate Association (CREA) and identify real estate professionals who are members of CREA. The trademarks MLS®, Multiple Listing Service® and the associated logos are owned by CREA and identify the quality of services provided by real estate professionals who are members of CREA.