



2425 Ryser Place West Kelowna British Columbia

\$1,050,000

Discover your dream home in the heart of Tallus Ridge, one of West Kelowna's most desirable family-friendly neighbourhoods nestled in the Shannon Lake area. Surrounded by nature, parks, and scenic trails, this vibrant community offers a peaceful lifestyle just minutes from schools, golf, and all the essentials. Step into the bright foyer and enjoy the seamless flow into the open-concept living room, dining area, and kitchen—perfect for entertaining. The main level also features a spacious bedroom, a large partially covered deck for year-round enjoyment, and the primary suite, complete with a generous ensuite bathroom for your own private retreat. Downstairs offers even more living space with a large rec room, wet bar, two oversized bedrooms, and access to a covered patio and beautifully landscaped yard—ideal for relaxing or hosting guests. This home has been meticulously maintained and includes thoughtful upgrades like reverse osmosis, a water softener, and a new washer and dryer (2024). Just steps from local bike, ATV, and hiking trails and only a short drive to Shannon Lake Golf Course, schools, and shopping, this home offers the perfect blend of comfort, convenience, and outdoor adventure. (id:6769)

Other 9'4" x 5'9"

Utility room 29'9" x 15'9"

Recreation room 28'8" x 23'9"

Bedroom 11'10" x 15'7"

Bedroom 10'6" x 15'9"

Other 10'5" x 4'11"

4pc Bathroom 7'9" x 10'2"

Other 10'2" x 9'10"

The property information on this website is derived from the Canadian Real Estate Association's Data Distribution Facility (DDF®). DDF® references real estate listings held by various brokerage firms and franchisees. The accuracy of information is not guaranteed and should be independently verified. The trademarks REALTOR®, REALTORS® and the REALTOR® logo are controlled by The Canadian Real Estate Association (CREA) and identify real estate professionals who are members of CREA. The trademarks MLS®, Multiple Listing Service® and the associated logos are owned by CREA and identify the quality of services provided by real estate professionals who are members of CREA.

Primary Bedroom 12'11" x 15'11"

Full bathroom 8'6" x 5'11"

Pantry 10'3" x 4'11"

Living room 15'9" x 24'10"

Kitchen 12'5" x 10'2"

Other 22'5" x 22'5"

Foyer 7'8" x 9'6"

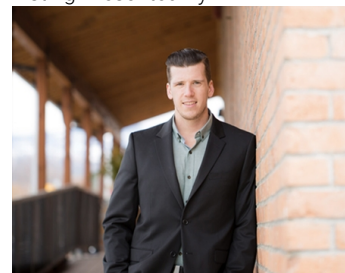
Dining room 10'5" x 13'9"

Bedroom 10'6" x 13'

5pc Ensuite bath 10'2" x 10'8"

Full bathroom 8'6" x 5'11"

Listing Presented By:



Originally Listed by:
eXp Realty (Kelowna)

<http://www.kelownahomesteam.ca/>

RE/MAX Kelowna

RE/MAX Kelowna

100-1553 Harvey Avenue ,
Kelowna, BC, V1Y 6G1

Phone: 250-870-6145
dallas@remaxkelowna.com