



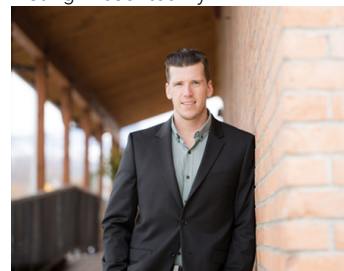
2527 Pinnacle Ridge Drive West Kelowna British Columbia

\$499,000

Lot 23 in the thriving Tallus Ridge community, nestled in the picturesque Shannon Lake surroundings of West Kelowna, boasts captivating lake views, presenting an excellent investment opportunity. This expanding neighborhood offers an array of amenities, including nearby hiking trails, easy access to the tranquil waters of Shannon Lake, and convenient shopping options. Families will appreciate the proximity to outstanding school districts, while recreational enthusiasts can enjoy golfing and community gatherings. Please note that builder approval by the developer ensures architectural consistency and safeguards property values. Tallus Ridge epitomizes a coveted lifestyle, making it an enticing destination for young families, retirees, and astute developers looking to capitalize on the growing demand for quality homes with breathtaking lake vistas.

(id:6769)

Listing Presented By:



Originally Listed by:
RE/MAX Kelowna

RE/MAX Kelowna

RE/MAX Kelowna

100-1553 Harvey Avenue ,
Kelowna, BC, V1Y 6G1

Phone: 250-870-6145
dallas@remaxkelowna.com

The property information on this website is derived from the Canadian Real Estate Association's Data Distribution Facility (DDF®). DDF® references real estate listings held by various brokerage firms and franchisees. The accuracy of information is not guaranteed and should be independently verified. The trademarks REALTOR®, REALTORS® and the REALTOR® logo are controlled by The Canadian Real Estate Association (CREA) and identify real estate professionals who are members of CREA. The trademarks MLS®, Multiple Listing Service® and the associated logos are owned by CREA and identify the quality of services provided by real estate professionals who are members of CREA.