



## 1550 Union Road 27 Kelowna British Columbia

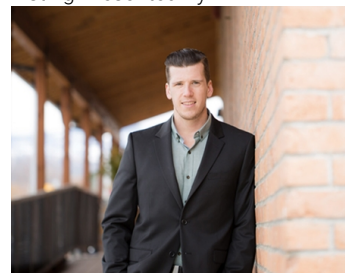
\$769,900

For more information, please click the Brochure button below. Phase 1 of Pondside Landing now selling. A new 61-unit townhome project in Wilden. Units now available and with some still under construction! Sizes ranging from 1500 sq.ft to over 2700 sq. Two different unit types offering 3 bedrooms and 3 baths of unique modern urban living in the heart of Wilden. Juniper units starting at \$769,900 plus GST and all have roof top terraces starting at over 330 sq.ft. Elderberry units starting at \$1,149,900 plus GST and are located along the shoreline of Still Pond. Desirable pond location a stone's throw away from walking trails, neighborhood parks and the future home to Wilden's Market Square and Wilden Elementary. Only a 5% deposit and the rest paid on completion. Open 1-5 daily and Fridays by appointment! (id:6769)

4pc Bathroom Measurements not available  
 4pc Ensuite bath Measurements not available  
 Bedroom 10'10" x 9'6"  
 Bedroom 10'10" x 9'6"

Primary Bedroom 11'5" x 11'10"  
 Living room 12'4" x 13'3"  
 Kitchen 14'0" x 11'7"  
 2pc Bathroom Measurements not available

Listing Presented By:



Originally Listed by:  
 Easy List Realty

<http://www.easylistrealty.ca/>

**RE/MAX Kelowna**

**RE/MAX Kelowna**

100-1553 Harvey Avenue ,  
 Kelowna, BC, V1Y 6G1

Phone: 250-870-6145  
[dallas@remaxkelowna.com](mailto:dallas@remaxkelowna.com)

The property information on this website is derived from the Canadian Real Estate Association's Data Distribution Facility (DDF®). DDF® references real estate listings held by various brokerage firms and franchisees. The accuracy of information is not guaranteed and should be independently verified. The trademarks REALTOR®, REALTORS® and the REALTOR® logo are controlled by The Canadian Real Estate Association (CREA) and identify real estate professionals who are members of CREA. The trademarks MLS®, Multiple Listing Service® and the associated logos are owned by CREA and identify the quality of services provided by real estate professionals who are members of CREA.