

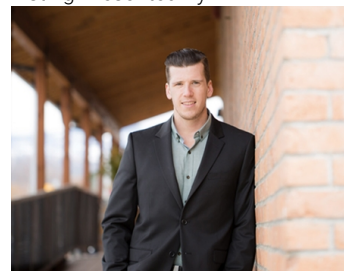


2821 EVERGREEN Drive Penticton British Columbia

\$399,900

Discover the perfect location to build your dream home! This stunning lake and city view lot is ideal for a rancher with a walk-out basement, offering breathtaking scenery and ample space to bring your vision to life. To make the process seamless, Level 2 Developments has already designed a beautiful home perfectly suited for this lot. Fully serviced with city water, sanitary sewer, storm sewer, electrical, and Fortis gas, this lot is ready for construction. Located in a desirable neighborhood close to Wiltse hiking trails and the Elementary School, this property offers both convenience and natural beauty. Bring your own builder or let us connect you with one of our trusted, quality local builders. Don't miss this fantastic opportunity to secure one of the best-priced lots in town--contact us today! (id:6769)

Listing Presented By:



Originally Listed by:
Chamberlain Property Group

<http://www.teamthompson.com/>

RE/MAX Kelowna

RE/MAX Kelowna

100-1553 Harvey Avenue ,
Kelowna, BC, V1Y 6G1

Phone: 250-870-6145
dallas@remaxkelowna.com

The property information on this website is derived from the Canadian Real Estate Association's Data Distribution Facility (DDF®). DDF® references real estate listings held by various brokerage firms and franchisees. The accuracy of information is not guaranteed and should be independently verified. The trademarks REALTOR®, REALTORS® and the REALTOR® logo are controlled by The Canadian Real Estate Association (CREA) and identify real estate professionals who are members of CREA. The trademarks MLS®, Multiple Listing Service® and the associated logos are owned by CREA and identify the quality of services provided by real estate professionals who are members of CREA.