



290 Ponto Road Kelowna British Columbia

\$1,550,000

Excellent development, investment or holding property. Potential land assembly of 3 lots for a total of 0.54 Acres 205.80 x 112.53 with great access from 3 roads (Ponto, Asher & McDonald) and a back laneway make for great development opportunities in Rutland's Urban Center UC4 zoning. This 0.18 acres 68.60 x 112.53 corner property with front, back and side access is zoned for up to 6 story development with 1.6 FAR with permitted uses including apartment style housing, townhomes and stacked townhouses, major child care center. This 4 bedroom 2 bathroom home is currently rented so you have income while you wait to develop the assembly. Convenient location close to schools, parks and shopping. (id:6769)

3pc Bathroom 7'4" x 4'10"

Primary Bedroom 11'7" x 11'

Bedroom 11'9" x 9'5"

Family room 18'9" x 12'11"

Bedroom 10'7" x 9'3"

Bedroom 9'6" x 8'7"

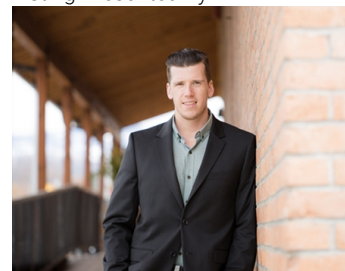
Laundry room 7' x 6'6"

3pc Bathroom 9' x 6'3"

Kitchen 11'4" x 8'11"

Living room 12' x 12'7"

Listing Presented By:



Originally Listed by:
Oakwyn Realty Okanagan

<http://www.craigcookrealty.com/>

RE/MAX Kelowna

RE/MAX Kelowna

100-1553 Harvey Avenue,
Kelowna, BC, V1Y 6G1

Phone: 250-870-6145
dallas@remaxkelowna.com

The property information on this website is derived from the Canadian Real Estate Association's Data Distribution Facility (DDF®). DDF® references real estate listings held by various brokerage firms and franchisees. The accuracy of information is not guaranteed and should be independently verified. The trademarks REALTOR®, REALTORS® and the REALTOR® logo are controlled by The Canadian Real Estate Association (CREA) and identify real estate professionals who are members of CREA. The trademarks MLS®, Multiple Listing Service® and the associated logos are owned by CREA and identify the quality of services provided by real estate professionals who are members of CREA.