



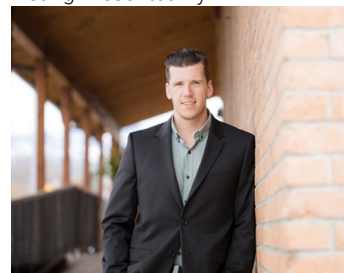
## 3226 Appaloosa Road 2C,3C,4C Kelowna British Columbia

\$3,410,625

Units at Link Academy offer highly flexible floor plans ranging from 8,025 sf up to 18,040 sf of contiguous space. Featuring both front or rear loading options, Link Academy is perfect for businesses that require high-exposure showroom space, corporate office appeal, light manufacturing or warehousing and distribution.

Units start at \$425/SF - Estimated completion Q2 2025. Detailed brochure available in supplements. (id:6769)

Listing Presented By:



Originally Listed by:  
Coldwell Banker Horizon Realty

**RE/MAX Kelowna**

**RE/MAX Kelowna**

100-1553 Harvey Avenue ,  
Kelowna, BC, V1Y 6G1

Phone: 250-870-6145  
dallas@remaxkelowna.com