

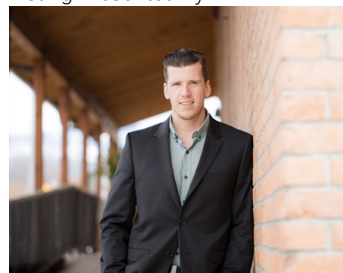


## 670 Evans Court 3 Kelowna British Columbia

\$18

Centrally located warehouse unit in the Finns Road area of Kelowna. This unit is 1,488sf on the main, plus a bonus mezzanine area of 400sf. I-2 zoning allows multiple uses. 10 x 14 Overhead Door, plus three parking stalls. Available November 1st. (id:6769)

Listing Presented By:



Originally Listed by:  
Royal LePage Kelowna

**RE/MAX**Kelowna

**RE/MAX Kelowna**

100-1553 Harvey Avenue ,  
Kelowna, BC, V1Y 6G1

Phone: 250-870-6145  
dallas@remaxkelowna.com

The property information on this website is derived from the Canadian Real Estate Association's Data Distribution Facility (DDF®). DDF® references real estate listings held by various brokerage firms and franchisees. The accuracy of information is not guaranteed and should be independently verified. The trademarks REALTOR®, REALTORS® and the REALTOR® logo are controlled by The Canadian Real Estate Association (CREA) and identify real estate professionals who are members of CREA. The trademarks MLS®, Multiple Listing Service® and the associated logos are owned by CREA and identify the quality of services provided by real estate professionals who are members of CREA.