

305 & 295 Clarissa Road Kelowna British Columbia

\$3,188,000

****DEVELOPER ALERT**** RARE opportunity to develop 1.48 acres (64,468.80 sq ft) of MF2 zoned land in the heart of Rutland South. MF2 zoning supports row townhomes up to 3 storeys high. The property currently features a single family home and a Tenanted fourplex (mo. to mo.). Walking distance to Ecole Belgo Elementary School, Transit and is across the street from Belgo Park. Close to many restaurants, shopping, schools, Rutland arena and the YMCA. Bring your development ideas, potential FAR of approx 1.0 (id:6769)

Family room 14'8" x 20'3"

Bedroom 9'10" x 10'9"

Full bathroom Measurements not available

Kitchen 10'9" x 12'4"

Other 15'5" x 16'8"

Laundry room 9'9" x 5'5"

2pc Bathroom Measurements not available

4pc Bathroom Measurements not available

Office 16'8" x 11'5"

Bedroom 10'11" x 11'10"

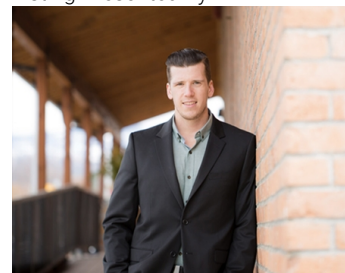
Primary Bedroom 18'6" x 11'9"

Dining room 14' x 11'5"

Living room 20'11" x 13'

Kitchen 14' x 10'2"

Listing Presented By:



Originally Listed by:
Royal LePage Kelowna

<http://www.sandrascott.ca/>

RE/MAX Kelowna

RE/MAX Kelowna

100-1553 Harvey Avenue,
Kelowna, BC, V1Y 6G1

Phone: 250-870-6145
dallas@remaxkelowna.com

The property information on this website is derived from the Canadian Real Estate Association's Data Distribution Facility (DDF®). DDF® references real estate listings held by various brokerage firms and franchisees. The accuracy of information is not guaranteed and should be independently verified. The trademarks REALTOR®, REALTORS® and the REALTOR® logo are controlled by The Canadian Real Estate Association (CREA) and identify real estate professionals who are members of CREA. The trademarks MLS®, Multiple Listing Service® and the associated logos are owned by CREA and identify the quality of services provided by real estate professionals who are members of CREA.