



## 2388 Baron Road 310 Kelowna British Columbia

\$499,999

Centrally located, west facing, 2 bedrooms 2 bathrooms unit at The Gateway! You will love this 1184sqft, open floor plan with numerous updates. Kitchen has stylish custom cabinets by Kekuli Bay Cabinetry, stainless appliances, granite counters, and a large sit-up island. Living room has a corner gas fireplace and a sliding door to the balcony. Large primary bedroom with walk in closet and a 4-piece ensuite. This unit also comes with a nice sized second bedroom, 3 piece bathroom and in-suite laundry with stacking washer & dryer. Other updates over years include hardwood flooring, washer/dryer, fridge/stove/dishwasher, hot water tank, light fixtures. Strata replaced the roof in 2021. Secure underground parking & large storage locker. Complex has games room/gym, bbq area & guest suite. Unbeatable location close to Orchard Park Mall, Superstore, Costco, Freshco, local restaurants, coffee shops, and other businesses. Close to public transportation. (id:6769)

3pc Bathroom Measurements not available

Bedroom 12'2" x 10'1"

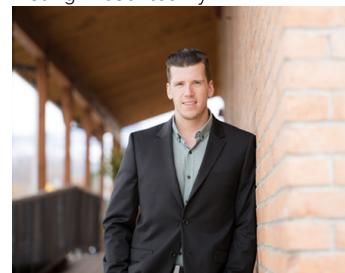
4pc Ensuite bath 8' x 4'11"

Primary Bedroom 14'5" x 14'1"

Living room 20'8" x 17'10"

Kitchen 15'8" x 11'

Listing Presented By:



Originally Listed by:  
RE/MAX Kelowna

**RE/MAX** Kelowna

**RE/MAX Kelowna**

100-1553 Harvey Avenue,  
Kelowna, BC, V1Y 6G1

Phone: 250-870-6145  
dallas@remaxkelowna.com

The property information on this website is derived from the Canadian Real Estate Association's Data Distribution Facility (DDF®). DDF® references real estate listings held by various brokerage firms and franchisees. The accuracy of information is not guaranteed and should be independently verified. The trademarks REALTOR®, REALTORS® and the REALTOR® logo are controlled by The Canadian Real Estate Association (CREA) and identify real estate professionals who are members of CREA. The trademarks MLS®, Multiple Listing Service® and the associated logos are owned by CREA and identify the quality of services provided by real estate professionals who are members of CREA.