



6400 Spencer Road 34 Kelowna British Columbia

\$639,900

Welcome to Country View Estates, a 19+ community located in Ellison. This well maintained 2 bedroom, 2 bathroom 1072 sqft rancher with a crawl space. It is cozy and well taken care of on a corner lot property Updated newer Kitchen. Newly painted last year. Newer laminate flooring throughout and a convenient layout in a peaceful yet close to town country setting. Close to the University (UBCO), airport and Kelowna. Golfing and parks are nearby. Valley views and open space are especially nice. This community allows for 2 domestic pets (no height or weight restrictions), access to walking trails and a number of local amenities including the airport, hiking trails, dog parks and more! Contact your realtor to book a showing today! (id:6769)

Primary Bedroom 12'0" x 12'10"

Living room 15'4" x 16'7"

Laundry room 9'5" x 5'2"

Kitchen 12'8" x 12'0"

Other 21'4" x 11'7"

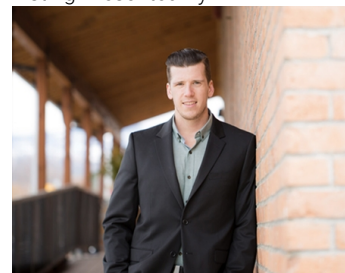
Dining room 10'1" x 12'0"

Bedroom 12'10" x 10'6"

4pc Bathroom 8'7" x 4'11"

2pc Bathroom 4'0" x 7'2"

Listing Presented By:



Originally Listed by:
RE/MAX Kelowna

<http://clickforhomes.ca/>

RE/MAX Kelowna

RE/MAX Kelowna

100-1553 Harvey Avenue ,
Kelowna, BC, V1Y 6G1

Phone: 250-870-6145
dallas@remaxkelowna.com

The property information on this website is derived from the Canadian Real Estate Association's Data Distribution Facility (DDF®). DDF® references real estate listings held by various brokerage firms and franchisees. The accuracy of information is not guaranteed and should be independently verified. The trademarks REALTOR®, REALTORS® and the REALTOR® logo are controlled by The Canadian Real Estate Association (CREA) and identify real estate professionals who are members of CREA. The trademarks MLS®, Multiple Listing Service® and the associated logos are owned by CREA and identify the quality of services provided by real estate professionals who are members of CREA.