



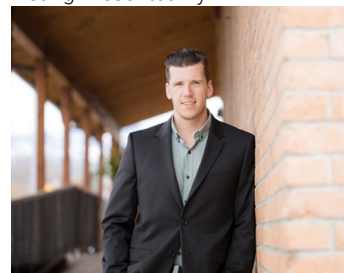
## 1060 Manhattan Drive 340 Kelowna British Columbia

\$15

Fully improved office space for sublease in the North-End of Downtown Kelowna with possible demising options. Beautiful 3rd floor unit of approx. 3,591 SF with 7 individual offices includes manager's office, boardroom, reception area, file room/storage, server room, kitchenette, and nearby shared washrooms. Up to 7 reserved, heated & secure underground parking stalls all at monthly market rates. Located in the Manhattan, a premiere, Class A architecturally striking office building in part of a rapidly growing part of Kelowna. Building amenities include roof-top patio, showers & lockers, and building is fully secured including card lock access.

This is an outstanding opportunity, sublease term ends April 30, 2027 with possibility of a longer term (negotiated with landlord). The building is located just south of the former Tolko Mill Site which is proposed to be redeveloped into a world-class, sustainable community with about 3,500 residential units and commercial space. (id:6769)

Listing Presented By:



Originally Listed by:  
RE/MAX Kelowna

<https://www.commercialbc.com/>

**RE/MAX Kelowna**

**RE/MAX Kelowna**

100-1553 Harvey Avenue ,  
Kelowna, BC, V1Y 6G1

Phone: 250-870-6145  
[dallas@remaxkelowna.com](mailto:dallas@remaxkelowna.com)