

## 395 Edith Gay Road Kelowna British Columbia

\$899,000

DEVELOPMENT OPPORTUNITY. Perfect lot to develop a duplex. 114' by 76'. Future OCP zoning S-RES. Single and two dwelling residential / Secondary suites and carriage houses. Some complimentary uses are supported. Three-plex, four-plex and cottage housing may be supported in proximity to frequent transit, schools and other amenities. Home is nicely updated and well maintained. Great location next to Edith Gay Park. (id:6769)

Full bathroom Measurements not available

Bedroom 11' x 11'

Partial bathroom Measurements not available

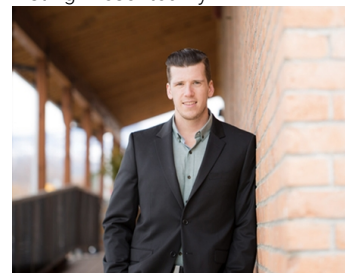
Kitchen 8'0" x 10'0"

Living room 13'0" x 12'0"

Primary Bedroom 12'0" x 12'0"

Bedroom 11' x 11'

Listing Presented By:



Originally Listed by:  
eXp Realty (Kelowna)

<http://calchepil.ca/>

**RE/MAX** Kelowna

**RE/MAX Kelowna**

100-1553 Harvey Avenue,  
Kelowna, BC, V1Y 6G1

Phone: 250-870-6145  
[dallas@remaxkelowna.com](mailto:dallas@remaxkelowna.com)

The property information on this website is derived from the Canadian Real Estate Association's Data Distribution Facility (DDF®). DDF® references real estate listings held by various brokerage firms and franchisees. The accuracy of information is not guaranteed and should be independently verified. The trademarks REALTOR®, REALTORS® and the REALTOR® logo are controlled by The Canadian Real Estate Association (CREA) and identify real estate professionals who are members of CREA. The trademarks MLS®, Multiple Listing Service® and the associated logos are owned by CREA and identify the quality of services provided by real estate professionals who are members of CREA.