



303 Whitman Road 403 Kelowna British Columbia

\$399,000

Welcome to Brandt's Crossing in the heart of Glenmore. This top floor, east-facing unit offers a bright, open layout and a private balcony where you can enjoy the morning sun. Perfectly situated, you're just steps away from shopping, grocery stores, restaurants, and more. Everything you need is right at your doorstep. The building includes access to amenities such as an exercise room, social room with library, and a workshop. Conveniently along major bus routes. Don't miss the opportunity to make this charming condo your new home! (id:6769)

Laundry room 6'9" x 5'8"

Full bathroom Measurements not available

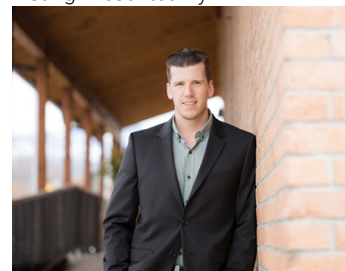
Primary Bedroom 12'4" x 11'10"

Kitchen 12'0" x 9'4"

Dining room 12' x 8'

Living room 15' x 12'

Listing Presented By:



Originally Listed by:
Royal LePage Kelowna

<http://www.markjontz.com/>

RE/MAX Kelowna

RE/MAX Kelowna

100-1553 Harvey Avenue,
Kelowna, BC, V1Y 6G1

Phone: 250-870-6145
dallas@remaxkelowna.com

The property information on this website is derived from the Canadian Real Estate Association's Data Distribution Facility (DDF®). DDF® references real estate listings held by various brokerage firms and franchisees. The accuracy of information is not guaranteed and should be independently verified. The trademarks REALTOR®, REALTORS® and the REALTOR® logo are controlled by The Canadian Real Estate Association (CREA) and identify real estate professionals who are members of CREA. The trademarks MLS®, Multiple Listing Service® and the associated logos are owned by CREA and identify the quality of services provided by real estate professionals who are members of CREA.