



3180 De Montreuil Court 412 Kelowna British Columbia

\$345,000

Top-floor living just minutes from downtown and Okanagan College, this bright 2-bedroom, 2-bathroom corner unit checks all the right boxes for first-time buyers, families, or savvy investors. With 850 square feet of well-designed space, the layout offers privacy and flexibility, making it ideal for roommates or growing households. Large windows fill the home with natural light, while recent upgrades add comfort and peace of mind. Step out onto the spacious deck to enjoy fresh air and a bit of extra breathing room, perfect for morning coffee or winding down after a long day. Having two full bathrooms means no more negotiating over morning routines, which is always a win. Located just off KLO, you're only minutes to the beach, Pandosy Village, and all the shops, restaurants, and amenities downtown Kelowna has to offer. This is easy, convenient living in a location that keeps you connected to it all. (id:6769)

Dining room 17'6" x 12'3"

Living room 12'10" x 11'8"

Kitchen 9'5" x 7'8"

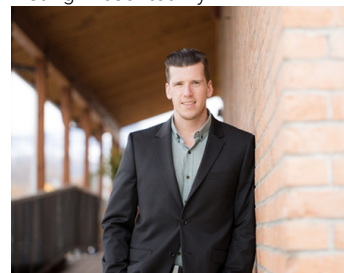
Primary Bedroom 10'5" x 16'4"

3pc Ensuite bath 4'11" x 7'8"

Bedroom 9'7" x 11'8"

3pc Bathroom 5'8" x 7'10"

Listing Presented By:



Originally Listed by:
Vantage West Realty Inc.

RE/MAX Kelowna

RE/MAX Kelowna

100-1553 Harvey Avenue ,
Kelowna, BC, V1Y 6G1

Phone: 250-870-6145
dallas@remaxkelowna.com

The property information on this website is derived from the Canadian Real Estate Association's Data Distribution Facility (DDF®). DDF® references real estate listings held by various brokerage firms and franchisees. The accuracy of information is not guaranteed and should be independently verified. The trademarks REALTOR®, REALTORS® and the REALTOR® logo are controlled by The Canadian Real Estate Association (CREA) and identify real estate professionals who are members of CREA. The trademarks MLS®, Multiple Listing Service® and the associated logos are owned by CREA and identify the quality of services provided by real estate professionals who are members of CREA.