



420 Asher Road Kelowna British Columbia

\$1,450,000

Presenting an exceptional land assembly with amazing potential for a 6 to 9 storey multifamily building and the opportunity to do a rental-purposed build. Located within 400 meters of a major transit exchange, this site qualifies for parking exemptions, enhancing development efficiency and affordability. With favorable zoning and strong population growth, the site is ideally positioned to meet Kelowna's rising housing demand.

Proximity to key amenities—including schools, shopping, parks, and UBCO this is a chance for developers and investors to capitalize on a high-density project in one of Kelowna's fastest-growing urban neighborhoods.

(id:6769)

Dining room 11'7" x 10'6"

3pc Bathroom 10'0" x 10'0"

Living room 15'0" x 11'7"

Bedroom 12'0" x 11'0"

Bedroom 12'0" x 12'4"

Kitchen 10'0" x 22'0"

4pc Bathroom 8'10" x 5'0"

Bedroom 10'2" x 8'10"

Bedroom 12'6" x 9'2"

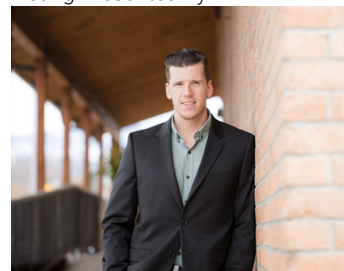
Primary Bedroom 12'0" x 10'0"

Kitchen 13'0" x 8'6"

Dining room 13'0" x 7'6"

Living room 19'6" x 12'4"

Listing Presented By:



Originally Listed by:
eXp Realty (Kelowna)

<http://www.searchkelownaproperties.com/>

RE/MAX Kelowna

RE/MAX Kelowna

100-1553 Harvey Avenue ,
Kelowna, BC, V1Y 6G1

Phone: 250-870-6145
dallas@remaxkelowna.com

The property information on this website is derived from the Canadian Real Estate Association's Data Distribution Facility (DDF®). DDF® references real estate listings held by various brokerage firms and franchisees. The accuracy of information is not guaranteed and should be independently verified. The trademarks REALTOR®, REALTORS® and the REALTOR® logo are controlled by The Canadian Real Estate Association (CREA) and identify real estate professionals who are members of CREA. The trademarks MLS®, Multiple Listing Service® and the associated logos are owned by CREA and identify the quality of services provided by real estate professionals who are members of CREA.