



# 3160 Casorso Road 424 Kelowna British Columbia

\$355,000

Located in Kelowna's Lower Mission, this top-floor, immaculate 1 Bed/1 Bath is 619 SQ FT and freshly painted, with newer lighting fixtures, dishwasher, wall A/C and windows. Residents can enjoy the walkability of the Lower Mission with Gyro Beach & Pandosy Village 2 blocks away. Enjoy the convenience of the Mission Park Plaza with shops, cafes, restaurants, and medical facilities just across the street this location in Kelowna's vibrant Lower Mission is amazing! The complex offers excellent amenities, including an outdoor pool, gym, hot tub, sauna, and a guest suite, catering to both relaxation and convenience. It is also pet-friendly, accommodating either 2 cats or 1 dog up to 14" at the shoulder. Given its affordability, desirable features and prime location ( Okanagan College across the road), this unit is expected to attract considerable interest. Don't miss out on the chance to make this your new home! (id:6769)

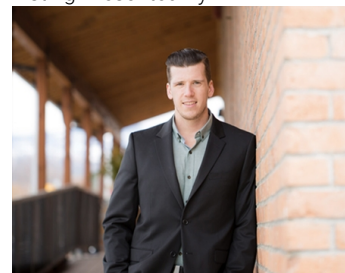
Full bathroom 7'7" x 5'

Kitchen 10' x 9'5"

Living room 14' x 10'

Primary Bedroom 14' x 9'

Listing Presented By:



Originally Listed by:  
Royal LePage Kelowna

<http://nikzimmer.royallepage.ca/>

**RE/MAX Kelowna**

**RE/MAX Kelowna**

100-1553 Harvey Avenue ,  
Kelowna, BC, V1Y 6G1

Phone: 250-870-6145  
[dallas@remaxkelowna.com](mailto:dallas@remaxkelowna.com)

The property information on this website is derived from the Canadian Real Estate Association's Data Distribution Facility (DDF®). DDF® references real estate listings held by various brokerage firms and franchisees. The accuracy of information is not guaranteed and should be independently verified. The trademarks REALTOR®, REALTORS® and the REALTOR® logo are controlled by The Canadian Real Estate Association (CREA) and identify real estate professionals who are members of CREA. The trademarks MLS®, Multiple Listing Service® and the associated logos are owned by CREA and identify the quality of services provided by real estate professionals who are members of CREA.